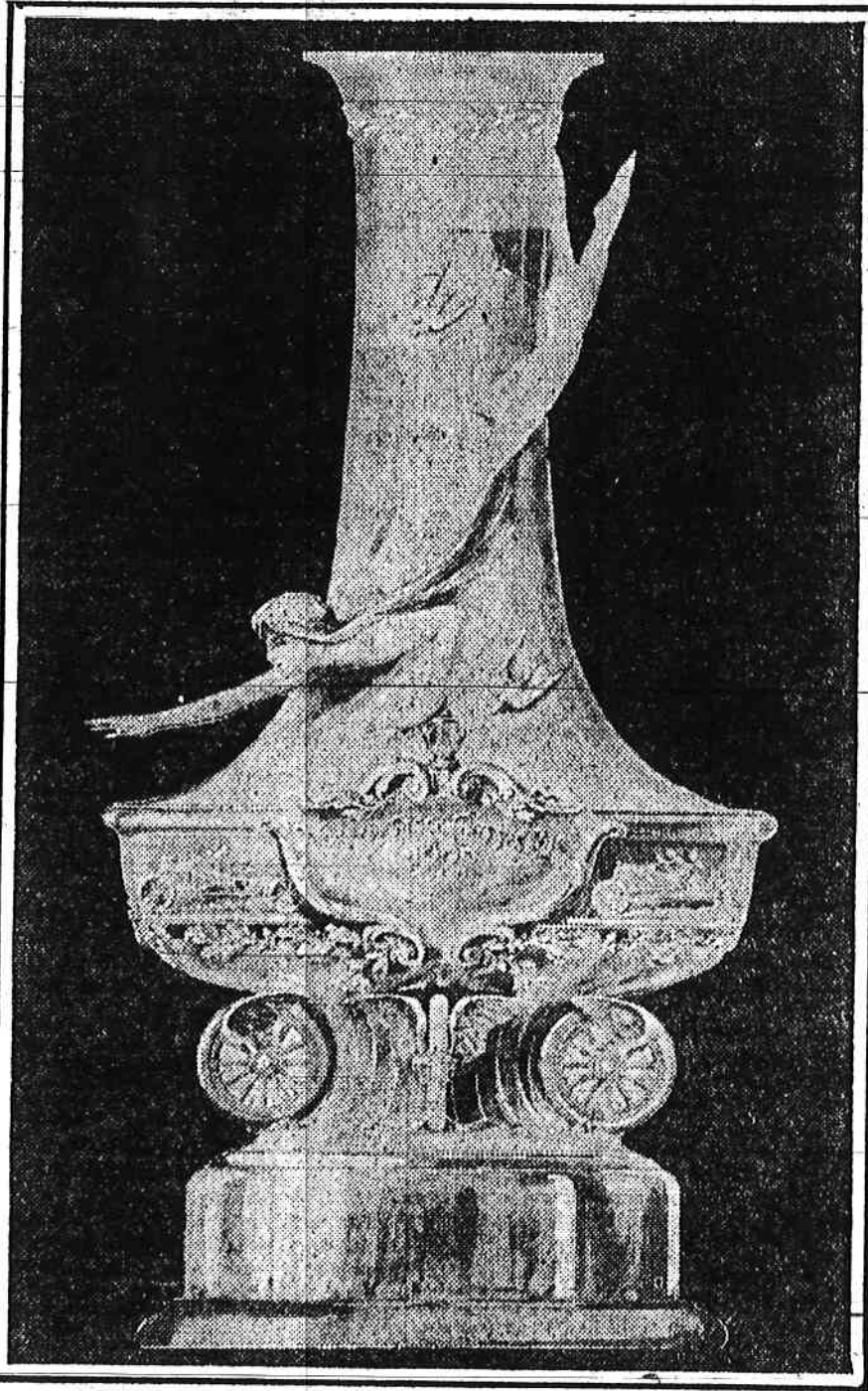


## Cobe Trophy Hung Up for Auto Racers



The Cobe Trophy, the massive silver symbol of victory in the Western Stock Chassis Race, for which the pick of the racing drivers of the world will contend on June 19, is a radical departure in design from the classic race trophies which have preceded it. Departing from the cup model usually accepted the artist has copied the lines of a graceful Grecian urn, with broad base and long and comparatively slender neck.

Standing thirty-nine and one-half inches in height, the trophy, while modeled with a view to conveying the impression of weight, substance and permanency, also expresses the idea of lightness and grace and above all of

speed, symbolical of the event for which the trophy is awarded.

The trophy itself—that portion which is of sterling silver—stands thirty inches in height, and is mounted on a base of malachite marble, which in turn stands on an ebony base.

The relief work on the silver base is modeled along strict motoring designs, firmly establishing its identity as an automobiling trophy. Ionic plates, with appropriate wording, appear on the front and reverse of the trophy, the one bearing the inscription, "The Cobe Trophy, Western Stock Chassis Race," and the other being left blank for the names of the winners. The winner who first gains two victories will gain permanent possession of the trophy.

run play and Otto was doubled at second when Slagle struck out.

Hall pitched great ball after that, and Hayden, who singled to right with two men down in the eighth inning, was the only Champ to reach first base, and he

pitch—Selby. Left on bases—Louisville, 6; Milwaukee, 6. Time—2 hours. Umpires—Owen and Eckman.

TOLEDO, 4; MINNEAPOLIS, 0.

TOLEDO, O., June 13. Minneapolis was

## CARS WILL TRY OUT RACE COURSE TODAY

Preliminary Spins to Take Place on the Crownpoint-Lowell Automobile Speedway.

## PILOTS TEST THE ROADBED

Explorers Study the Situation and Learn Every Trick of the Tortuous Northwest Leg.

### Facts About Auto Races

Date of light car race	June 18
Number of entries	18
Foreign entry	1
Date of Cobe Cup race	June 19
Different makes of cars	13
Number of entries	12
Foreign entry	1
Where held	Crownpoint, Ind.
Length of circuit	23.6 miles
Distance from Chicago	44.8 miles
Length of light car race	232 miles
Number of laps	10
Number of curves, each circuit	11
Hour of start	8 a. m.
Estimated hour of finish	1 p. m.
Estimated average speed	52 miles
Length of Cobe race	395 miles
Number of laps	17
Total number curves	187
Hour of start	8 a. m.
Estimated hour of finish	2:45 p. m.
Estimated average speed	58 miles
Length of 1908 Savannah Grand prize	400.2 miles
Average speed at Savannah	65.11 miles
World's record for speed	74 miles
Number of flag stations	41
When course will close	7 a. m.
Entry fee in each race	\$500
Railroads for course	8

CROWNPOINT, Ind., June 13.—Properly safeguarded, practice for the Cobe and Indiana Trophy motor races on June 18 and 19 will begin tomorrow. Much exploring work was accomplished by the motor pilots over the Crownpoint-Lowell course today. The roadbed was tested and experimental turns were made to determine just how fast the cars may safely take the curves.

There is a very sharp turn at Lowell, where the streets are narrow and where the drivers today found it necessary to slow down to twenty miles an hour. The narrowness of the course at this point makes this the most difficult twist of the route. Some difficulty also was experienced with the turn around a corner of the Lowell Cemetery on the south leg of the course. The picturesque "S," three miles southwest of Crownpoint, was negotiated with comparative ease, the road being fairly good and the grade rising.

The "early birds" have been studying the situation, learning every trick of the tortuous northwest leg and how to take advantage of curves, hills and descents in the

Gos

Today is

None of wore easy, team further

Hall had apolis batt it went wide

Cockman front of the Champs' of

The crowd quiet. Ey fourth was

Cross fell Wrigley, w the first in

Slagle sili ing to field Flynn got c

Burke m ounder wh his gloved

Pitcher K Nationals, Kelly today the Salute.

Flynn nev first when line drive out of the

Howley h the bases. Cross and when he ca

Manager C in the gam says he can as they kee first.

Burke ma ers, but he foul fly in other one in put him ou

Carlsch w the fourth h to one side too as it sh the ball in the catcher

Graham is lame side. be in shape reaches St. I be used in Miller's righ to the curve

McClesney yesterday an from his cha tion again.

Perry Werd ing lines. P permitted to of the game.

It must b Howley the fans. You d the good old to become o that ever wo timely bingle ho blocked AAY increased that Howley is causing lo pennant win

Bumpus Jo care of the his last thr looking for w probably won suffering from back, receive Manager Car staff in shar regular turn trip. Wedne Cheney and Slagle will b game of the

HITS F

VETS LO

# Up for Auto Racers



# CARS WILL TRY OUT RACE COURSE TODAY

Preliminary Spins to Take Place  
on the Crownpoint-Lowell  
Automobile Speedway.

## PILOTS TEST THE ROADBED

Explorers Study the Situation and  
Learn Every Trick of the Tor-  
tuous Northwest Leg.

### *Facts About Auto Races*

Date of light car race.....	June 18
Number of entries .....	18
Foreign entry .....	1
Date of Cobe Cup race.....	June 19
Different makes of cars.....	13
Number of entries .....	12
Foreign entry.....	1
Where held.....	Crownpoint, Ind.
Length of circuit.....	23.6 miles
Distance from Chicago.....	44.8 miles
Length of light car race.....	232 miles
Number of laps.....	10
Number of curves, each circuit.....	11
Hour of start.....	8 a. m.
Estimated hour of finish.....	1 p. m.
Estimated average speed.....	52 miles
Length of Cobe race.....	395 miles
Number of laps.....	17
Total number curves.....	187
Hour of start.....	8 a. m.
Estimated hour of finish.....	2:45 p. m.
Estimated average speed.....	58 miles
Length of 1908 Savannah Grand	

## Gos

Today is

None of t  
were easy, l  
team furthe

Hall had  
apolis. batte  
it went wid

Cockman  
front of the  
Champs' eff

The crowd  
quiet. Eve  
fourth was

Cross fell o  
Wrigley, wh  
the first inn

Slagle slip  
ing to field  
Flynn got cr

Burke ma  
bounder wh  
his gloved h

Pitcher Ka  
Nationals, Is  
Kelly today  
the Saints.

Flynn neve  
first when B  
line drive a  
out of the s

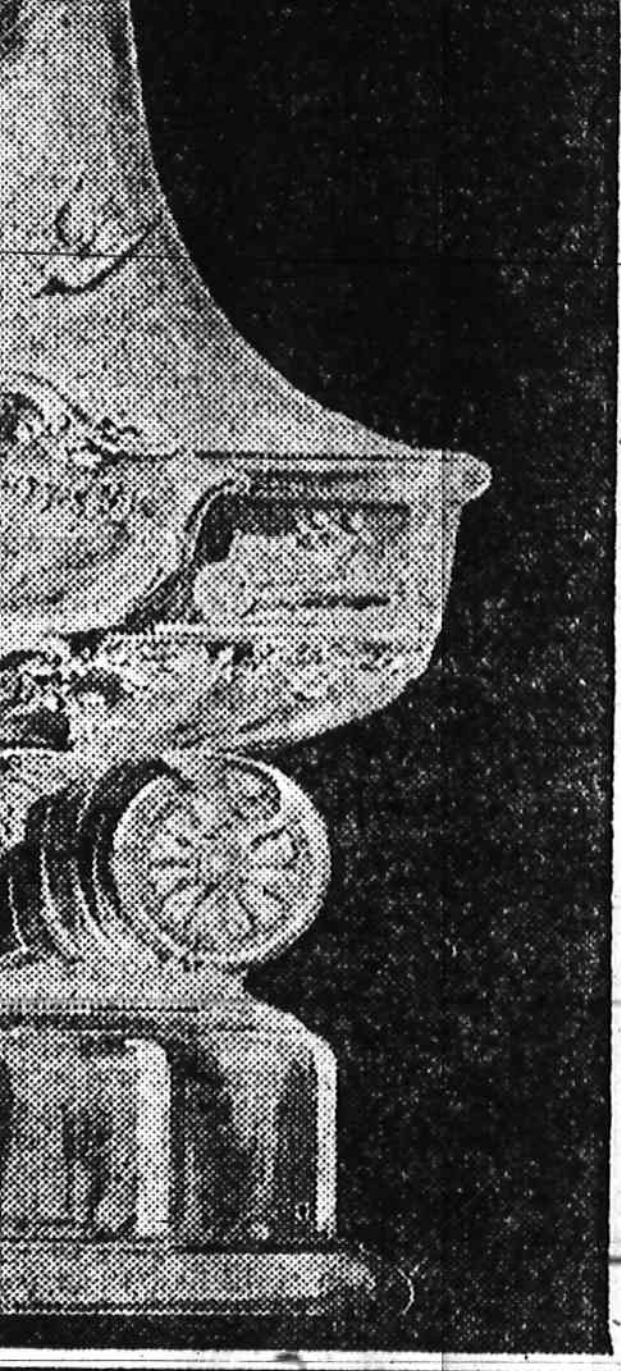
Howley ha  
the bases.  
Cross and It  
when he cau

Manager C  
in the game  
says he can't  
as they keep  
first.

Burke mad  
ers, but he  
foul fly in t  
other one in  
put him out.

Carlsch wa  
the fourth in  
to one side a  
toe as it sho  
the ball in th  
the catcher f

Graham is  
lame side. M  
be in shape  
reaches St. P  
be used in th  
Millers' right  
to the curves



## Facts About Auto Races

Date of light car race.....	June 18
Number of entries.....	18
Foreign entry.....	1
Date of Cobe Cup race.....	June 19
Different makes of cars.....	18
Number of entries.....	12
Foreign entry.....	1
Where held.....	Crownpoint, Ind.
Length of circuit.....	23.6 miles
Distance from Chicago.....	44.8 miles
Length of light car race.....	282 miles
Number of laps.....	10
Number of curves, each circuit.....	11
Hour of start.....	8 a. m.
Estimated hour of finish.....	1 p. m.
Estimated average speed.....	52 miles
Length of Cobe race.....	395 miles
Number of laps.....	17
Total number curves.....	167
Hour of start.....	8 a. m.
Estimated hour of finish.....	2:45 p. m.
Estimated average speed.....	58 miles
Length of 1908 Savannah Grand prize.....	400.2 miles
Average speed at Savannah.....	65.11 miles
World's record for speed.....	74 miles
Number of flag stations.....	41
When course will close.....	7 a. m.
Entry fee in each race.....	\$500
Railroads to course.....	3

CROWNPOINT, Ind., June 13.—Properly safeguarded, practice for the Cobe and Indiana Trophy motor races on June 18 and 19 will begin tomorrow. Much exploring work was accomplished by the motor pilots over the Crownpoint-Lowell course today. The roadbed was tested and experimental turns were made to determine just how fast the cars may safely take the curves.

There is a very sharp turn at Lowell, where the streets are narrow and where the drivers today found it necessary to slow down to twenty miles an hour. The narrowness of the course at this point makes this the most difficult twist of the route. Some difficulty also was experienced with the turn around a corner of the Lowell Cemetery on the south leg of the course. The picturesque "S," three miles southwest of Crownpoint, was negotiated with comparative ease, the road

ed, symbolical of the event for which trophy is awarded.

The trophy itself—that portion which of sterling silver—stands thirty inches height, and is mounted on a base of white marble, which in turn stands on an ebony base.

The relief work on the silver base is modeled along strict motoring designs, thereby establishing its identity as an automobiling trophy. Ionic plates, with appropriate wording, appear on the front and reverse of the trophy, the one bearing the inscription, "The Cobe Trophy, Western Stock Chassis Race," and the other being left blank for the names of winners. The winner who first gains victories will gain permanent possession of the trophy.

—Selby. Left on bases—Louisville, 6; Milwaukee, 6. Time—2 hours. Umpires—

Flynn never first when I line drive out of the s

Howley has the bases. Cross and I when he cau

Manager C in the game says he can't as they keep first.

Burke made ers, but he foul fly in t other one in put him out

Carisch wa the fourth in to one side a toe as it sho the ball in th the catcher f

Graham is lame side. M be in shape reaches St. P be used in th Millers' right to the curves

McChesney yesterday and from his cha tion again. V Perry Werder ing lines. Pe permitted to of the game.

It must be Howley the v fans. You d the good old to become or that ever wor timely bingle, he blocked A stay increased that Hawley is causing lot pennant winn

Bumpus Jon care of the his last three looking for h probably wor suffering from back, received Manager Car staff in shap regular turns trip. Wednes Cheney and C Slagle will b game of the

HITS F