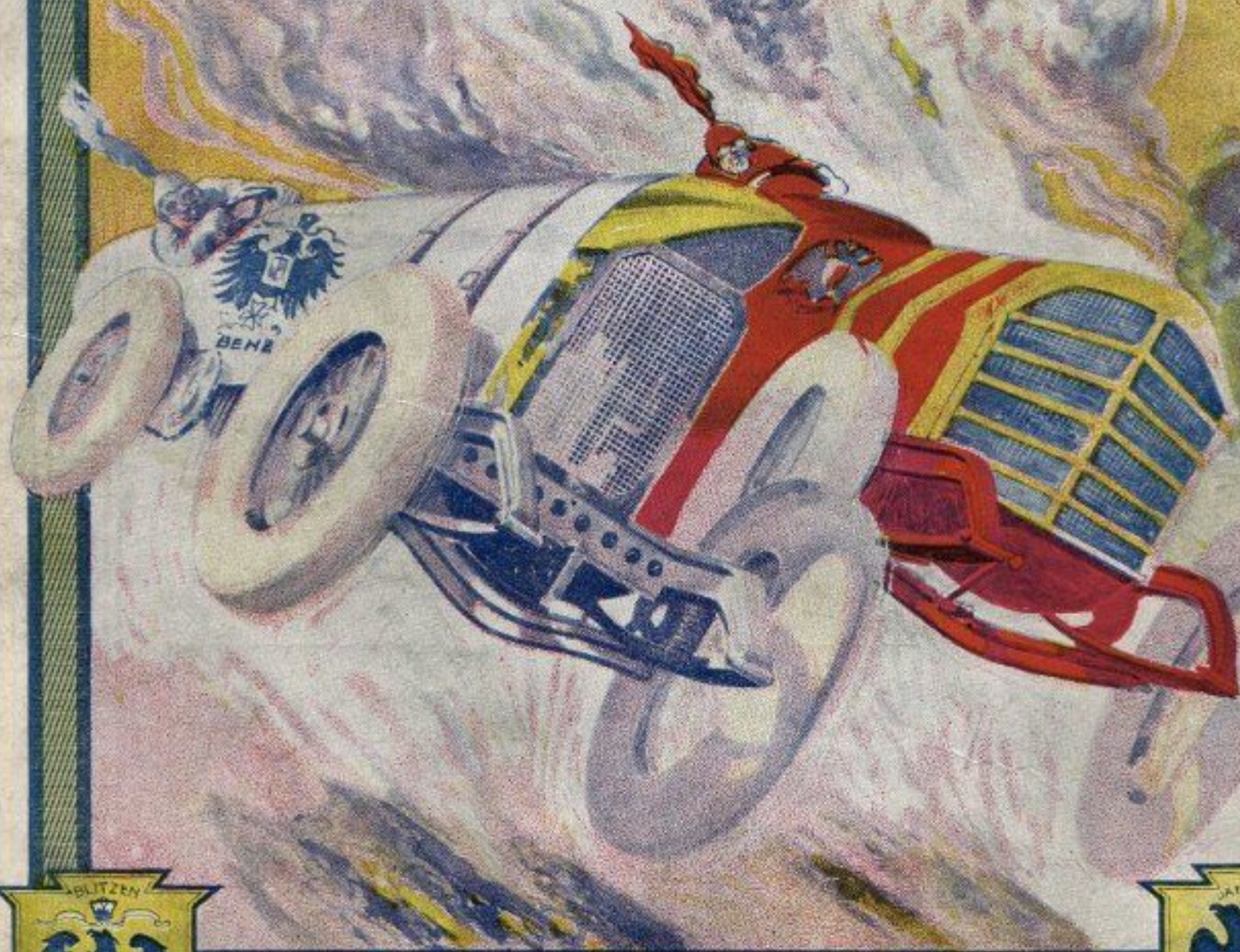


JULY 27, 1912
CRITTENDEN PARK ROCHESTER N.Y.

AAA # 478

AUTO RACES



OFFICIAL PROGRAM 10¢

Remy Magneto Wins



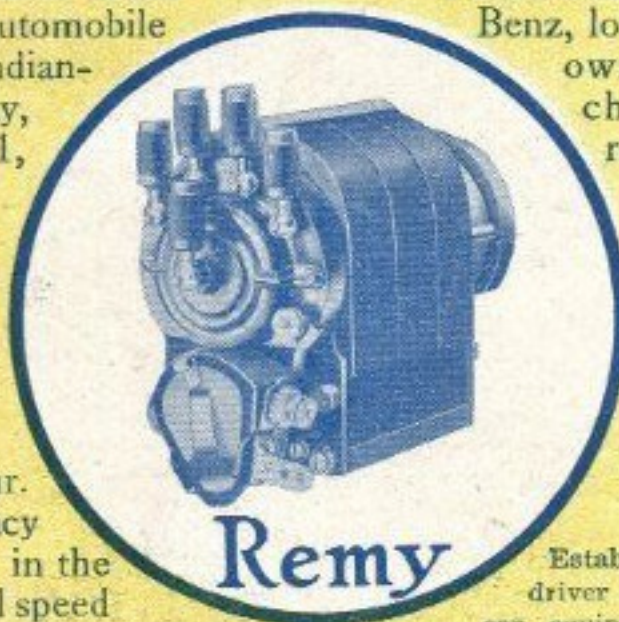
Blitzen Benz



"Bob" Burman

THE WORLD'S GREATEST MOTOR SPEED COMPETITION PROVES TRIUMPH FOR REMY IGNITION

Ray Harroun won the most sensational victory known to automobile racing history on the Indianapolis Motor Speedway, Tuesday, May 30, 1911, when he whipped the Remy-Equipped Marmon "Wasp" over the brick track for five hundred (500) miles at the savage world's record-breaking average of 74.62 miles per hour. Remy Ignition supremacy proven again and again in the world's most sensational speed and endurance races. Specify Remy equipment upon your car.



Two hundred horse power Blitzen Benz, lowers by many seconds its own records. The only change in Car was the replacement of two Magnetoes of other make by our Remy Magneto.

THE RECORDS

Kilometer, 15.88 seconds,
140.78 miles per hour.
One mile, 25.40 seconds,
141.73 miles per hour.
Two miles, 51.28 seconds,
140.40 miles per hour.

Established by the world's greatest driver in the world's greatest motor car, equipped with the world's greatest magneto, on Daytona, Fla., Beach, April 23, in Official Record Trials.

SPECIFY REMY EQUIPMENT



Ray Harroun



Marmon "Wasp" at 90 Miles an Hour



Remy Electric Co.

Factories - Anderson, Indiana - Gen'l Offices

NEW YORK BOSTON DETROIT CHICAGO KANSAS CITY
SAN FRANCISCO INDIANAPOLIS
MINNEAPOLIS HOLLIS ELECTRIC CO. PHILADELPHIA McCULLOUGH & SON
DENVER AUTO EQUIPMENT CO.



PRICE: 10 CENTS

AUTOMOBILE RACES

CRITTENDEN PARK :: :: JULY 27th, 1912

UNDER THE RULES AND WITH THE SANCTION OF THE A. A. A.

STARTER

REX CARTWRIGHT

JUDGES

J. W. COOK

M. E. BALLOU

AL ZIMBRICH

TIMERS

W. M. KIPP

C. E. HARTSON

L. D. LINDSAY

FLAG SIGNALS

Red Flag—Clear Course.

White Flag—Stop for Consultation.

B-G Checkered Flag—You are finished.

Yellow Flag—Stop instantly.

Green Flag—You are on your last lap.

Blue Flag—Accident on Course, drive with caution.

NATIONAL HOTEL CO.
Proprietors



GEORGE W. SWEENEY
President

Hotel Rochester

ROCHESTER, N. Y.

WM. D. HORSTMANN, : Manager

300 ROOMS
ALL WITH BATH

STANDARD AUTO TIRE WORKS

—FOR—

Prices on Tires, Tubes and Vulcanizing

409 Main St. East, Cor. Gibbs

Rochester, N. Y.

Motorcycle Races

EVENT A.

No.	Driver	No.	Driver
1.....	Edward Stauder	5.....	Edw. Van Almkirk
2.....	Warner Dolph	6.....	Edw. Tassel
3.....	Herman Klehr	7.....	Geo. Heckman
4.....	Norman Lewis	8.....	

EVENT B. Handicap.

No.	Driver	No.	Driver
1.....	Edward Stauder	5.....	Edw. Van Almkirk
2.....	Warner Dolph	6.....	Edw. Tassel
3.....	Herman Klehr	7.....	Geo. Heckman
4.....	Norman Lewis	8.....	

Stutz, Henderson and Benz Cars

Knipper-Kipp Co.

358 Main Street East

POSTERS FOR THESE RACES WERE MADE BY

THE

O T I S

LITHOGRAPH CO.

CLEVELAND

EVENT No. 1.

Class E, non-stock, 600 cubic inches and less in piston displacement, minimum weight of 2,000 pounds.

No.	Car.	Manufacturer.	Driver.
15.....	Cutting	Cutting Motor Car Co.....	Bob Burman
14.....	White	Frank Martz	Kyle
1.....		2	Time

EVENT No. 2.

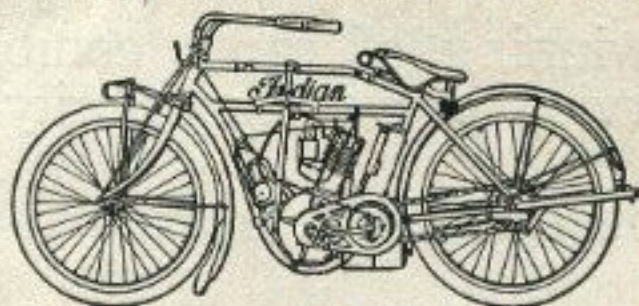
Class D, non-stock free-for-all open race. First heat. This event is best two out of three heats for the Remy Brassard and Trophy deed of gift which is part of entry blank, giving the winner \$75.00 per week and a \$2,500 Trophy donated by the Remy Electric Co., of Anderson, Ind., as per conditions on entry blank.

Distance to be announced.

No.	Car.	Manufacturer.	Driver.
3.....	Mercedes	Daimler Motor Gelleschaft.....	H. Hickman
14.....	White	Frank Martz	Kyle
1.....	Benz	Benz Auto Co.	Bob Burman
4.....	110 Benz	Benz Auto Co.	Elmer MacDonald
1.....		2	Time

"Count the Indians on the Road"

ROCHESTER'S LEADING STORE



INDIAN EXCELSIOR HENDERSON

The Geo. L. Miner Co.

CLINTON STREET Both Phones CORNER COURT

SEAMLESS TIRES

GUARANTEED FOR 5000 MILES
OF ACTUAL ROAD SERVICE

PNEUMATIC—YET CLOSELY
RIVALING SOLID TIRES IN
STRENGTH and DURABILITY

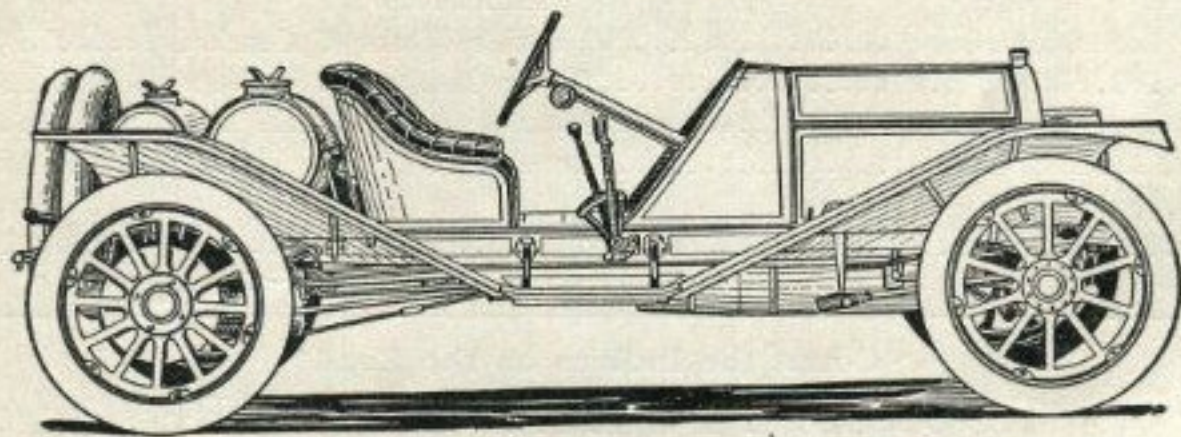
SOLD BY

SELLECK AUTO EQUIPMENT CO.

360 EAST MAIN STREET, ROCHESTER, N. Y.

THE MARMON

"THE EASIEST RIDING CAR IN THE WORLD"



Consistent winning of races, combined with satisfactory daily service proves superiority of mechanical construction.

The Marmon Cars have proven their value under all conditions.

LeHARDY & LINDSAY

308-310 EAST AVE. Both Phones ROCHESTER, N. Y.

EVENT No. 3

One mile exhibition by Bob Burman driving the Blitzen Benz. The record for a mile on the Crittenden Park driving track is 1:25. This event with flying start. Burman will raise his hand when he is ready to go.

1..... 2 Time

EVENT No. 4

Non-Stock, Class E. 600 inches and less in displacement; minimum weight of 2,000 lbs. Distance to be announced; for the W. B. TROPHY valued at \$2,500 with a weekly salary of \$25.00 to the winner as long as successfully defended by him.

No.	Car.	Manufacturer.	Driver.
15.....	Cutting	Cutting Motor Car Co.....	Bob Burman
14.....	White	Frank Martz	Kyle

1..... 2 Time

EVENT No. 5

Class D, non-stock free-for-all open race. Second heat. This event is best two out of three heats for the Remy Brassard and Trophy deed of gift which is part of entry blank, giving the winner \$75.00 per week and a \$2,500 Trophy donated by the Remy Electric Co., of Anderson, Ind.

No.	Car.	Manufacturer.	Driver.
1.....	Benz	Benz Auto Co.....	Bob Burman
4.....	110 Benz	Benz Auto Co.....	Elmer MacDonald
14.....	White	Frank Martz	Kyle
3.....	Mercedes	Daimler Motor Gelleschaft.....	H. Hickman

1..... 2 Time

EVENT No. 6

Final heat of Remy Brassard and Trophy. Class D, non-stock free-for-all open race. This event is best two out of three heats for the Remy Brassard and Trophy deed of gift which is part of entry blank, giving winner \$75.00 per week and a \$2,500 Trophy donated by the Remy Electric Co., of Anderson, Ind. To be run only in case that three heats are necessary as winning two heats decides the race.

No.	Car.	Manufacturer.	Driver.
3.....	Mercedes	Daimler Motor Gelleschaft.....	H. Hickman
14.....	White	Frank Martz	Kyle
1.....	Benz	Benz Auto Co.....	Bob Burman
4.....	110 Benz	Benz Auto Co.....	Elmer MacDonald

1..... 2 Time

CAN YOU BEAT THIS LINE?

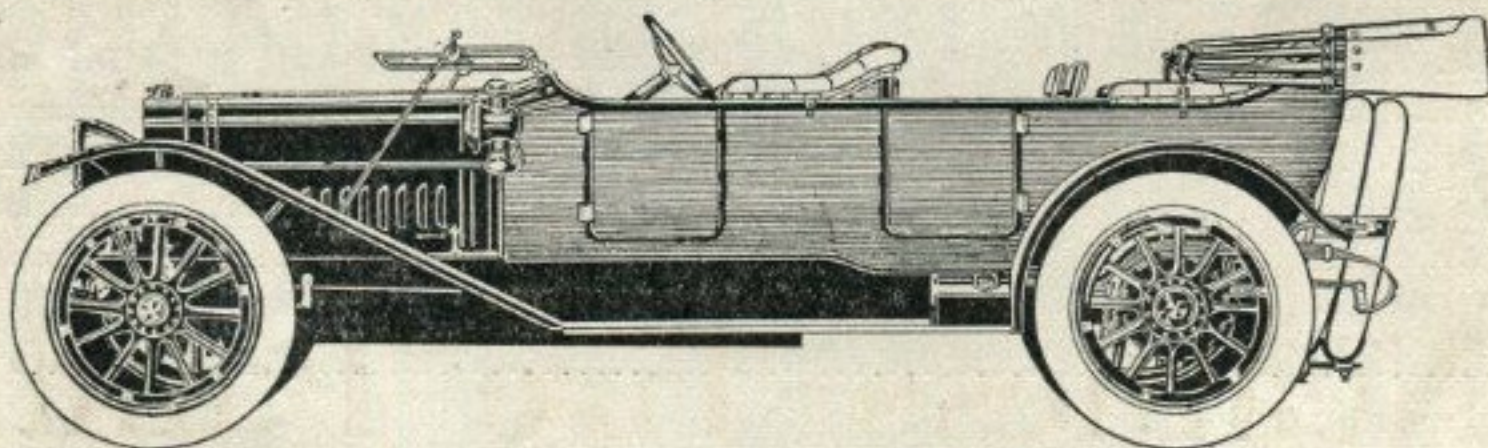
PEERLESS	60-6	\$6000.00
	48-6	5000.00
	38-6	4200.00
	40-4	4300.00
	Town Car	4200.00
CHALMERS	Touring Car Landaulet	5300.00
	Touring Car, 5-passenger	1850.00
	Torpedo, 4-passenger	1850.00
	MODEL 17 Roadster, 2-passenger	1850.00
	Touring Car, 7-passenger	2050.00
	MODEL 18 Touring Car, 5-passenger	2300.00
	Torpedo, 4-passenger	2300.00
	Roadster, 2-passenger	2300.00
	Touring Car, 7-passenger	2500.00
	Coupe, 4-passenger	2700.00
	Limousine, 7-passenger	3700.00

Rauch & Lang Electrics, \$2100 to \$3500

In Stanhopes, Broughams, Demi-Broughams and Coach

ARTHUR McNALL

EAST AVENUE AND SOUTH UNION STREET



"Every Inch a Car"

KISSEL KAR, 6-60 H. P. Price, \$3150, Fully Equipped. Electric Started and Electric Lighted. 140-Inch Wheel Base.

HERRESHOFF, 6-36 H. P. Price, \$1650, Fully Equipped. 124-Inch Wheel Base.

BEYDALL, 40-4, Speed Forward. 121-Inch Wheel Base. Electric Started and Lighted.

KISSEL TRUCKS

KELLY TRUCKS

BALL-WASHBURN MOTOR CO.

31 EAST AVENUE

ROCHESTER, N. Y.

“NEATNESS”

is NOT only a paint, but a tire
preservative, and its use means
ECONOMY and an ARISTO-
CRATIC LOOKING CAR

Price, 75c. a Pint

EVENT No. 7

Class E, non-stock special event free-for-all handicap race. Open to all cars regardless of class. Open to all cars that have participated in at least one event at this meet. Distance, 5 miles. Prize, \$25.00.

No.	Car.	Manufacturer.	Driver.
4.....	110 Benz	Benz Auto Co.	Billy Knipper
14.....	White	Frank Martz	Kyle
15.....	Cutting	Cutting Motor Car Co.....	Bob Burman
1.....	2	Time	

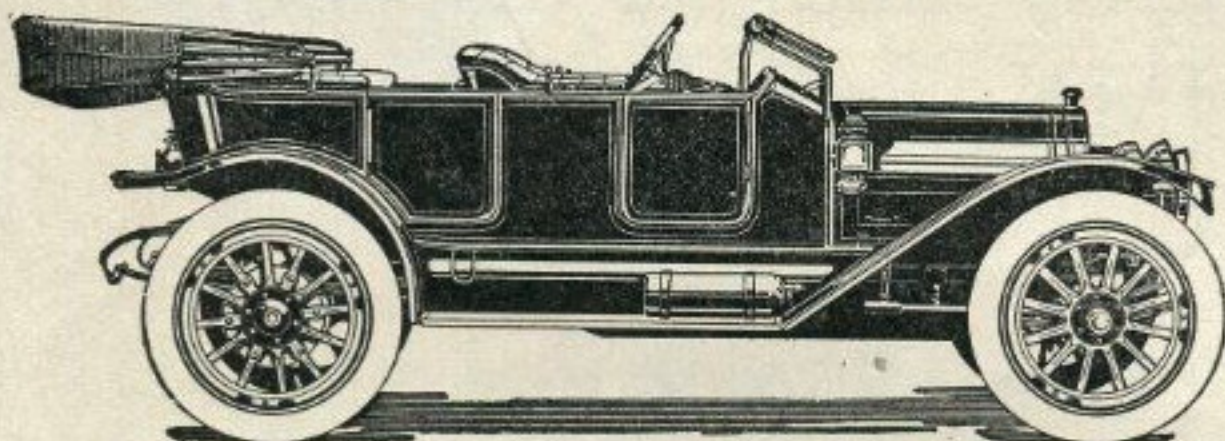
Neatness Tire Paint

is a Tire Food

NEATNESS CHEMICAL CO.

DETROIT, MICH.

Cutting



MODEL T-55

Touring Car

Price - \$1850

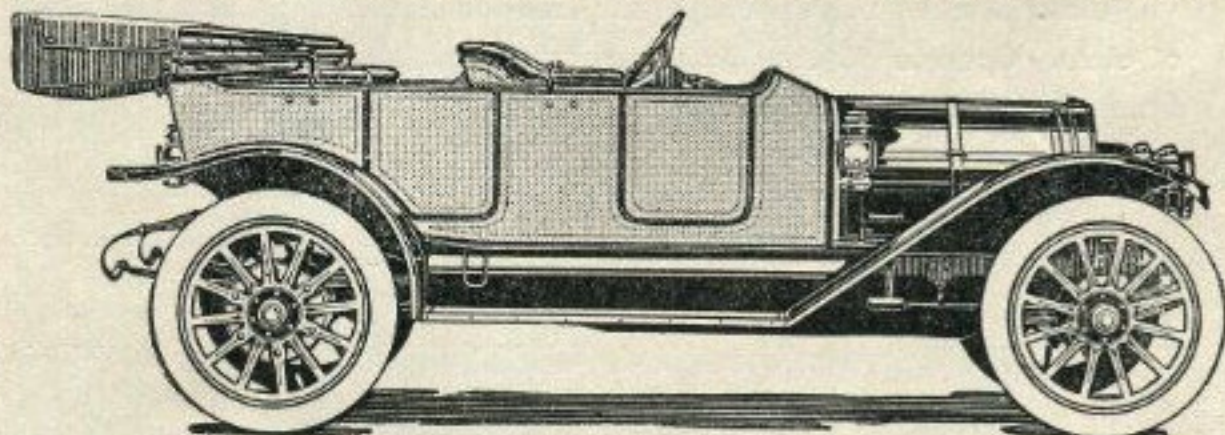
Fully Equipped

This is a big, roomy five-passenger touring car, with a powerful T-head 50 horse power motor, full floating rear axle and exceptionally long wheel base—126 inches—it develops a surplus of speed and power over all kinds of roads, and is absolutely the biggest and best car on the market at anywhere near the price. Equipment includes Top, Windshield and Prestolite Side and Tail Lamps are combination Electric and Oil. All lamps nickel and black enamel. Self-Starter will be furnished for a small additional charge.

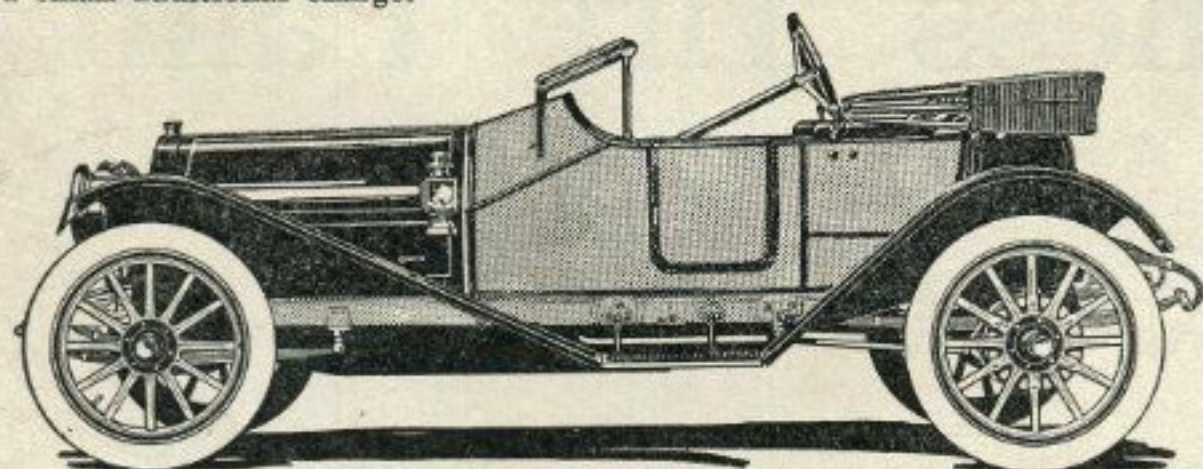
MODEL T-35

Touring Car

Price - \$1250



This beautiful torpedo body on the chassis of our A-30 gives a five-passenger car that meets the requirements of a large number of users. It represents the greatest possible value one can secure in an automobile for the money or anywhere near the money. It attracts immediate attention everywhere by its strikingly handsome appearance. Price does not include top. Self-Starter will be furnished for a small additional charge.



MODEL A-30

**Torpedo
Roadster**

Price - \$1200

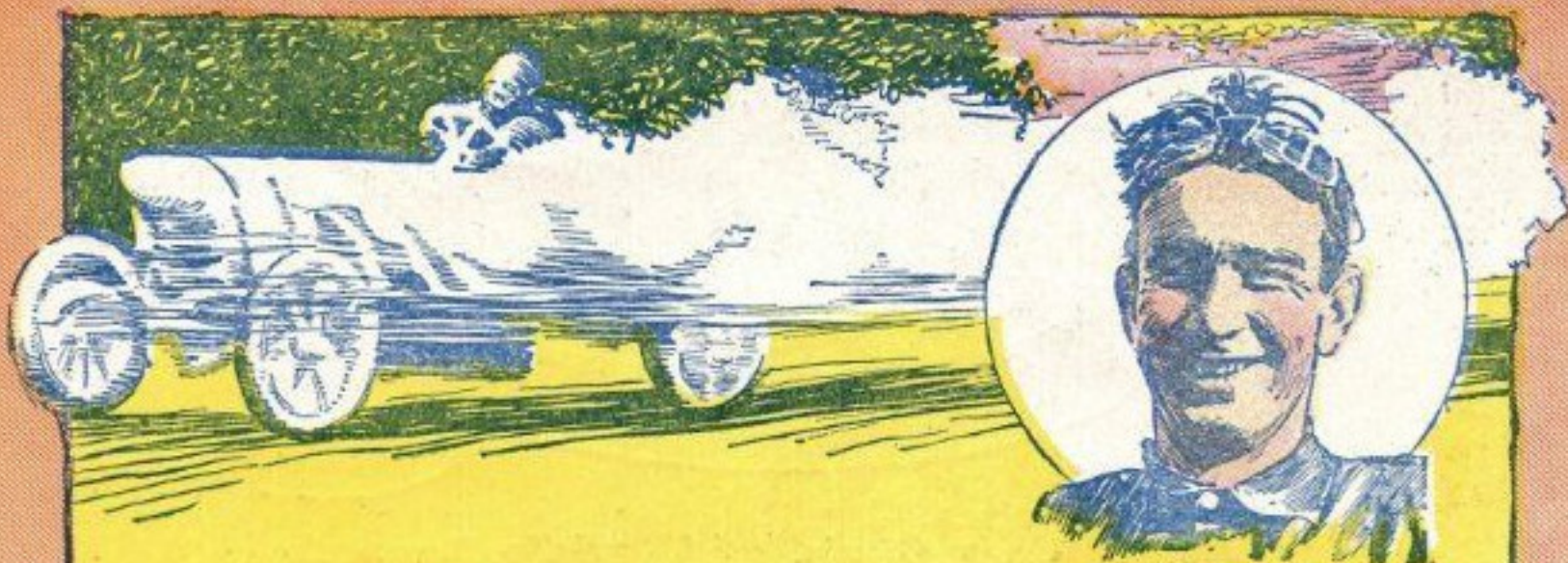
This is the handsomest Roadster built to-day regardless of price. Fully a year ahead of all others in design and equal to any car made in finish. No illustration can do it justice. The ideal two-passenger car. Long wheel base—116 inches—large wheels and tires, powerful, silent motor, exceptionally strong frame and axles, comfortable cushions and long, easy springs. Nickel trimmings throughout. Top and windshield extra. Self-Starter will be furnished for a small additional charge.

CUTTING AUTO SALES CO., INC.

NEW YORK STATE DISTRIBUTORS

AGENTS WANTED

EAST AVE., OLD No. 31, NEW No. 37



Polarine Oil

"The Best Ever"

Indianapolis, Ind., May 20, 1911.

Standard Oil Company:—

At my first trial to-day I broke all world's Speedway records from quarter to one mile. Time for mile, 35.35 seconds; kilometre, 21.41 seconds; half mile, 16.83 seconds; quarter mile, 8.16 seconds. Used your POLARINE OIL, as always. It's the best ever.

(Signed) BOB BURMAN.

"Nothing But Polarine For Me"

Daytona, Fla., April 23, 1911.

Standard Oil Company:—

To-day I lowered my world's records for the mile and kilometre; also established a world's record for two miles. Time for kilometre, 15.88 seconds; for mile, 25.40 seconds; for two miles, 51.28 seconds. Used Standard Oil Gasoline and POLARINE OIL in practice and in final trials, and it helped me break records. Nothing but POLARINE for me from now on.

(Signed) BOB BURMAN.

These performances again prove POLARINE the best automobile oil yet produced.

It stands up under all conditions of service.

Are you using Polarine on Your Car?

Write for our POLARINE booklet; free, post-paid,
from any agency of the

Standard Oil Company
(Incorporated)



Mile Standing
Start
88.82 m.p.h.

20 miles
90.90 m.p.h.

Class 5 Miles
76.00 m.p.h.

50 miles
83.42 m.p.h.

Class 1 Mile
89.28 m.p.h.

Speedway
1/4 mile
110.28 m.p.h.

Class 1 Kilometer
83.87 m.p.h.

Speedway 1/2 mile
108.36 m.p.h.

Track
50 miles
62.10
m.p.h.

Speedway
Kilometer
105.12
m.p.h.

Track 25 miles
65.83 m.p.h.

Speedway mile
101.83 m.p.h.

Track 20 miles
65.75 m.p.h.

Speedway
15 miles
86.37 m.p.h.

Track 15 miles
70.92 m.p.h.

Speedway
20 miles
85.03 m.p.h.

BLITZEN BENZ
Kilometer in 15.88
Seconds
140.86 Miles per hour

BLITZEN BENZ
One Mile in 25.40 Seconds
141.73 Miles per hour
Fastest ever Traveled

BLITZEN BENZ
Two Miles in 51.28
Seconds
140.40 miles per hour.

An Endless Chain of World's Records
Proves the Supreme Durability of

"Firestone" TIRES

We do not make special racing tires. Every Firestone case and inner tube has the benefit of our best thought and effort. It represents the highest achievement in specialized tire manufacture, the utmost in durability and mileage.

The Firestone tire you buy from your dealer is just the same as those used by the world's most famous race drivers. Extraordinary durability in racing service means extraordinary mileage in regular service.

The extra quality of material and workmanship necessary to insure this durability increases the manufacturing cost of Firestone tires. Yet it adds only a trifle to the selling price of each tire and pays you back *many times multiplied in extra miles of service—the*
Most Miles Per Dollar.

THE FIRESTONE TIRE & RUBBER CO.

"America's Largest Exclusive Tire and Rim Makers"

BOB BURMAN - DAYTONA APRIL 23