

## DOONS GAME

Up This  
Brewers  
sion.  
SURPRISE  
en Made  
ontest.

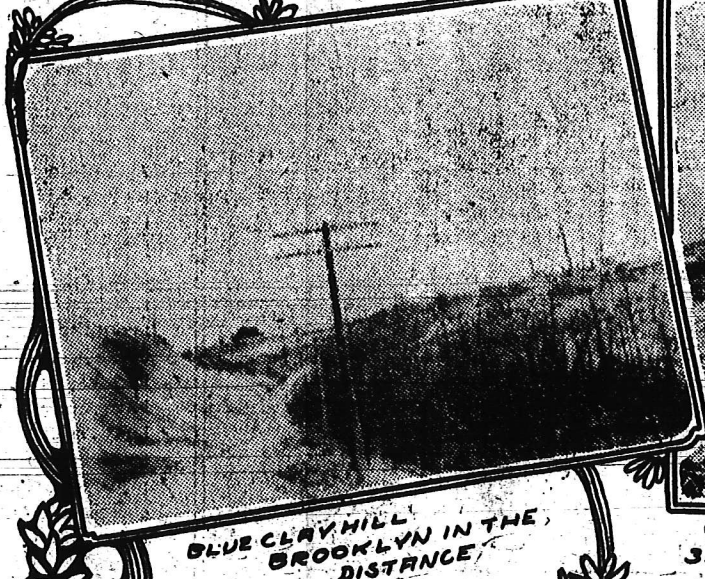
Sunday base-  
s played on  
nd to be the  
baseball sea-  
Watkins an-  
conference  
lawyers that  
today to  
rs and that  
evinced in  
the future  
ay Sabbath

ot altogether  
at fight that  
ay the anti-  
ment to the  
Sunday game  
re than ten  
game last  
ever gath-  
street park.  
Indianapo-  
ball but it  
ns can take  
me.  
rs since In-  
baseball as  
er Watkins  
ove that he  
ber of fans  
e it is al-  
apolis team  
h the other  
o play Sun-  
is perhaps  
attendance  
lanapolis is  
y it can be  
by of one  
sts from a

Club.  
have been  
play Sun-  
laws of the  
ed in this  
the slickest  
adopted in  
that city  
nal League  
placed to the  
the place lead-  
achers con-  
an at-  
liberty to  
law fit, but  
was tacked  
the grand-  
the custo-

uandary to  
day games  
ous to the  
was made  
l parks of  
at city, but  
to the ac-

## Scenes on a Day's Journey in an Autom



BLUE CLAY HILL  
BROOKLYN IN THE  
DISTANCE



ON MOORESVILLE PIKE AT BLACK ROCK  
3 1/2 MILES SOUTH OF PLAINFIELD.



NEBO  
BAPTIST CHURCH  
AT THE SUMMIT OF NEBO HILL



SALT CREEK AT NORTHERN EDGE OF BROWN COUNTY

There is a great demand among the many hundreds of owners of automobiles in Indianapolis, for a route that will give the tourist a good day's trip, enabling him to test his machine on speed as well as hill climbing, and giving the party an opportunity of seeing some beautiful scenery. Some few days ago several Indianapolis motorists were discussing a good trip such as described above, and through the efforts of H. T. Hearsey of the Hearsey Vehicle Company, resulted in a trial trip. The trip taken can rightfully be called the southwestern circle, and is undoubtedly the best 100 mile trip out of Indianapolis, leaving at 9 a. m. and returning at 6 p. m.

The first fourteen miles of the trip through Bridgeport to Plainfield is made by going due west on Washington street, following the National road, which parallels the Pennsylvania Railroad and the Plainfield Interurban. Here you find a

speedway which has been made in as short time as 32 minutes. Leaving Plainfield, the course pursues the Mooresville pike a distance of seven miles and gives the tourist the first bit of scenery at Black Rock schoolhouse, which is located upon a small hill with the peaceful White Lick at its feet. Continuing through Mooresville towards the south one mile, you reach Moon's Hill, which is the first real test at hill climbing. The trip at this point follows the I. & V. Railroad, a distance of five miles, into Brooklyn, passing many beautiful homes and stock farms, one of these being owned by John Black and is known over Indiana as Mt. Etna Stock Farm. The approach to Bethany Park out of Brooklyn, is beautiful, being touched with water, hills and beautiful wild flowers. In ascending Blue Clay hill the first difficult task is encountered in pulling through about eight inches of blue clay, which is kept moistened during the summer season by small springs at the sum-

mit. The view is very picturesque, and the country surrounding is beautiful in the extreme. The course here angles to the south and west through Centerton, until Blue Bluffs is reached and the remainder is due south into Martinsville, which is reached in time for dinner. The distance covered from Indianapolis to the Magnesia City is 35 miles and is all excellent gravel roads. Upon leaving Martinsville the excursionist enters upon the most enjoyable portion of the trip, which lies in a southeastern direction to Morgantown, eleven miles distant, going due east for one mile out of Martinsville and taking the road passing between the High Hollow schoolhouse and church, which are located opposite each other. Here is the first touch of hill climbing. Among the largest is the Rock and Nebo Hill and ridge. The Nebo hill is nearly two miles long, but not difficult to mount. Upon the summit the course is around the ridge a distance of two miles, passing many log cabins built years ago.

The most typical of these is owned by Hiram Skeggs, who with his large of ten, occupies four small rooms. Lacking a little in comparison with Colorado in picturesque impressiveness to be looked at with hats in hand, high water mark nearly eight feet from which you can see Brown Johnson counties. The beautiful peachards at this season of the year beyond all comparison. The through this section is very poor and not be cultivated. The farmers, good friends to the autoist, live in houses and colonies. A notable feature of Hopkirk is the many small churches and district schools. Farther on the tourists encounterably two miles of rough dirt road, leads into Morgantown from the Here you meet such friendly persons John Hickman and Jake Kellow, both of whom are always ready to give the directions towards Franklin, T. Samaria and Trafalgar, a distance

some of the best boys of his well the country. He has never been a real test and it may be that he is matched with a worthy foe for the entertainment. Andy Bezenah is considered, and should he be secured would attract great interest. son is a great favorite in the city many believe that he is of champion

## BLOW TO ATHLETICS

INTEREST TAKEN OUT OF GAME

sprout has been nipped before it has been allowed to bud.

New Aspirants for Pennant.

The college baseball race this year is not going to be a four-cornered affair as it has been in the past, for this season Rose Poly and State Normal hope to be factors in the final outcome, and it will not

## CARD FOR NEXT WEEK

SEVERAL MATCHES IN SIGHT

some of the best boys of his well the country. He has never been a real test and it may be that he is matched with a worthy foe for the entertainment. Andy Bezenah is considered, and should he be secured would attract great interest. son is a great favorite in the city many believe that he is of champion

INDIANAPOLIS, SUNDAY MORNING, APRIL 29, 1906.

## on a Day's Journey in an Automobile.



ON MOORESVILLE PIKE AT BLACK ROCK  
3 1/2 MILES SOUTH OF PLAINFIELD.

NEW INDIANAPOLIS SOUTH-  
ERN AT MORGANTOWN.

NEBO HILL AND  
RIDGE, RESIDENCE  
OF HIRAM SKEGGS  
800 FEET ELEVATION.

SALT CREEK AT NORTHERN EDGE OF BROWN COUNTY

which has been made in as short minutes. The course pursues the Blue Bluffs pike a distance of seven miles to the tourist the first bit of Black Rock schoolhouse, located upon a small hill with White Lick at its feet. Continuing Moorsville towards the Moorsville, you reach Moorsville, a first real test at hill climbing at this point follows the Blue Bluffs pike a distance of five miles. Passing many beautiful stock farms, one of these being John Black and is known over Mt. Etna Stock Farm. The apothecary Park out of Brooklyn, being touched with water, beautiful wild flowers. The Blue Clay hill the first difficulty encountered in pulling summit eight inches of blue clay, kept moistened during the summit by small springs at the summit.

The view is very picturesque, and the country surrounding is beautiful in the extreme. The course here angles to the south and west through Centerton, until Blue Bluffs is reached and the remainder is due south into Martinsville, which is reached in time for dinner. The distance covered from Indianapolis to the Magnesia City is 35 miles and is all excellent gravel roads. Upon leaving Martinsville the excursionist enters upon the most enjoyable portion of the trip, which lies in a southeastern direction to Morgantown, eleven miles distant, going due east for one mile out of Martinsville and taking the road passing between the High Hollow schoolhouse and church, which are located opposite each other. Here is the largest is the Rock and Nebo Hill and ridge. The Nebo hill is nearly two miles long, but not difficult to mount. Upon the summit the course is around the ridge a distance of two miles, passing many log cabins built years ago.

The most typical of these is owned by Hiram Skeggs, who with his large family of ten, occupies four small rooms. Lacking a little in comparison with Colorado in picturesque impressiveness, but to be looked at with hats in hand on the high water mark nearly eight hundred feet from which you can see Brown and Johnson counties. The beautiful peach orchards at this season of the year are beyond all comparison. The country through this section is very poor and can not be cultivated. The farmers, generous and friends to the autolists, live in small houses and colonies. A notable feature of Hoosierdom is the many small churches and district schools. Farther on the tourists encounter possibly two miles of rough dirt road, which leads into Morgantown from the west. Here you meet such friendly persons as John Hickman and Jake Kellow, both liverymen who are always ready to give you the directions towards Franklin, through Samaria and Trafalgar, a distance of sixteen miles. But before leaving the beautiful village of Morgantown should you desire to visit "Abe Martin" and "Jim Crow," both residents of Brown County, you have this privilege, and it is but two miles due south. At this point you can cover your machine over the boundry lines of Brown, Johnson and Owen counties and have the pleasure of a one mile coast into a small stream. The course into Franklin is northeast, and crosses the new Indianapolis Southern Railroad at the edge of Morgantown, running four miles due east and two north into Samaria, and two miles northeast through Trafalgar. From here to Franklin you encounter many small hills, which can be easily mounted without a change of gear. From Franklin to Indianapolis you traverse the speedway, which is perfectly level the entire distance of twenty miles, passing through Whitestown, Greenwood and Southport, entering the city at South Meridian street.

For the first time in the history of the game, the Hoosiers played a perfect game, and failing to lose the plate gave them the result that the ball was put over the fence, and the Hoosiers were slammed to the ground where the fielders in this session this with two marked. Never again a chance to win the were pathetic. The easiest kind when he succeeded line, was as he geometry yesterday curves could not the Indianapolis and a weather good any slants to see he made as though a salivary drop, and he was s keep them from The represents rusty-looking because they happened with the Hoosiers were to come the hits of the the spectators track of the two

**CARD FOR NEXT WEEK**  
SEVERAL MATCHES IN SIGHT

some of the best boys of his weight in the country. He has never been given a real test and it may be that he will be matched with a worthy foe for the next entertainment. Andy Bezenah is being considered, and should he be secured the bout would attract great interest. Bronson is a great favorite in the city and many believe that he will be the winner.

**POOR OUTLOOK FOR TEAM**  
TRACK WORK MAY BE DROPPED

## BREWERS VICTORY

Milwaukeeans for Two Score  
Scoring  
HALLA STAR  
Southpaw, H  
Relieved a

AMERICAN ASSOCIATION	
Louisville	.....
Toledo	.....
St. Paul	.....
Columbus	.....
Milwaukee	.....
Kansas City	.....
Minneapolis	.....
Indianapolis	.....

**MILWAUKEE**  
Climax is a sign that the highest reached, and the baseball state they had taken of the opening not so much of anti-hit and field a delightful expose everything several occasions the Brewers working the sphere. The Hoosiers creatively, the t with Milwaukee Hoosiers played has characterized part of the season was too much p For the first the Hoosiers again but, like the bo much prosperity an embarrassing Brewers once w slers never had procession home ner waving proud heroes and in the Hoosiers

been nipped before it has been bud.  
Aspirants for Pennant.  
baseball race this year is be a four-cornered affair as In the past, for this season and State Normal hope to be great contenders.