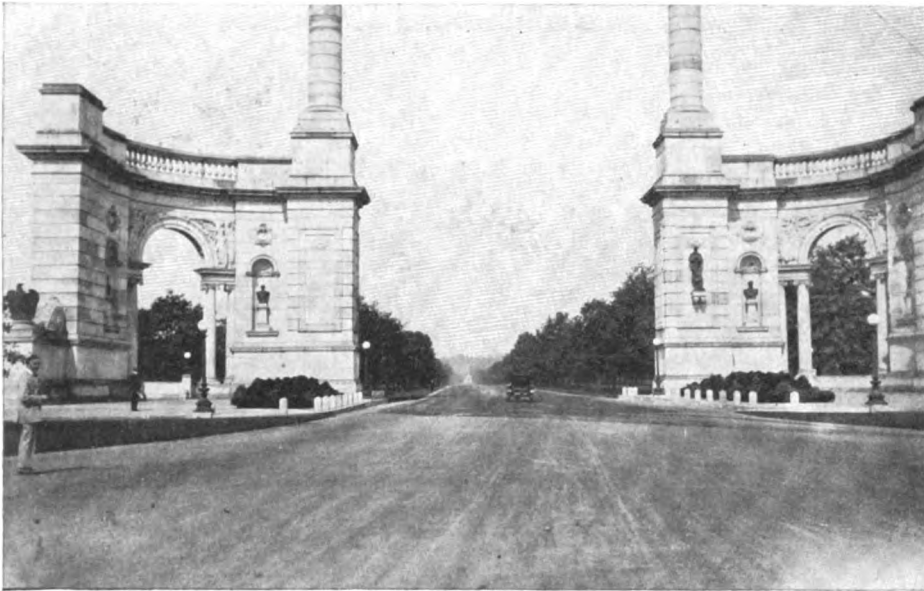


Philadelphia Park

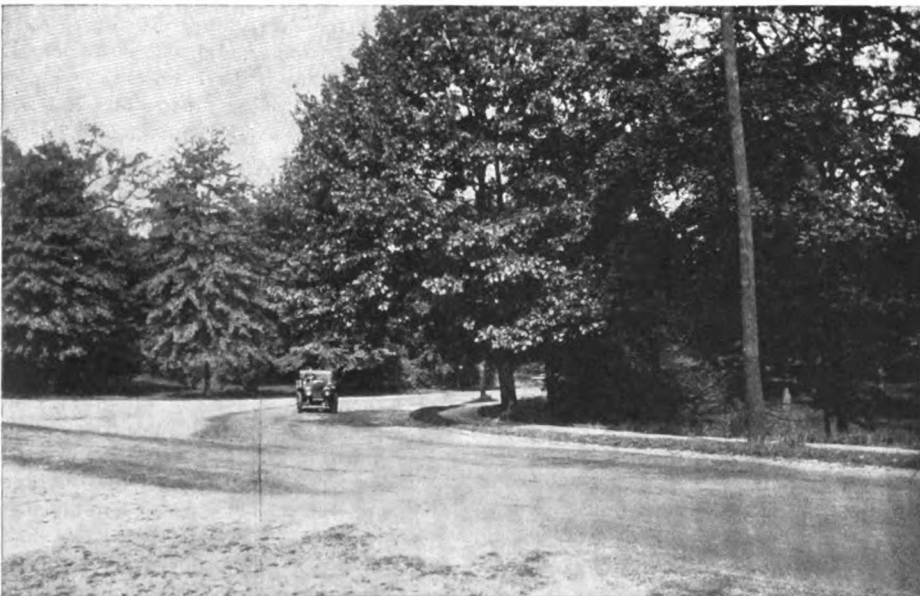
PHILADELPHIA, Pa., Sept. 14—Public opinion was too much for the conservative Fairmount park commission, and at its meeting last Friday it unanimously consented to grant the use of certain roads in the park on Saturday, October 10, to the Quaker City Motor Club for running off its 200-mile founders' week stock chassis road race. But before granting the desired permit the commissioners bound up the club with conditions to the limit. The club must put up a cash bond of \$2,500 to guarantee the repair of any damage to the roads, and file a surety bond of \$25,000 to insure the commission and city from loss in case either is sued for injury to persons or property as a result of the race. Another condition precedent to the granting of the permit was the elimination of several bad turns, and changing the course by cutting out about 2 miles of the proposed route around Horticultural hall and the lily pond; these changes, in the interest of safety, reduce the length of the course to 7.8 miles. The commission also insisted that the grade of oil proposed to be used by the Q. C. M. C. must be approved by the chief engineer and the superintendent. All these provisos were accepted by the club unhesitatingly, and although several letters from citizens were read protesting against granting the use of the park for any such purpose, the commission, to a man, voted for the proposed motor car race.

The route as finally revised is: Eastward from the start on the south concourse, in front of Memorial hall, to Lansdowne drive, down Sweetbriar hill, to West River drive, to Neill drive, to City Line avenue, to Belmont avenue, to North Wynnefield, to Fifty-second street, to the concourse, and thence to the starting point. This means about twenty-six trips over the course to finish the 200 miles. The commission also agreed to allow the use of the course for practice purposes "for 1 week prior to the race, from 7 a. m. to noon of every day."

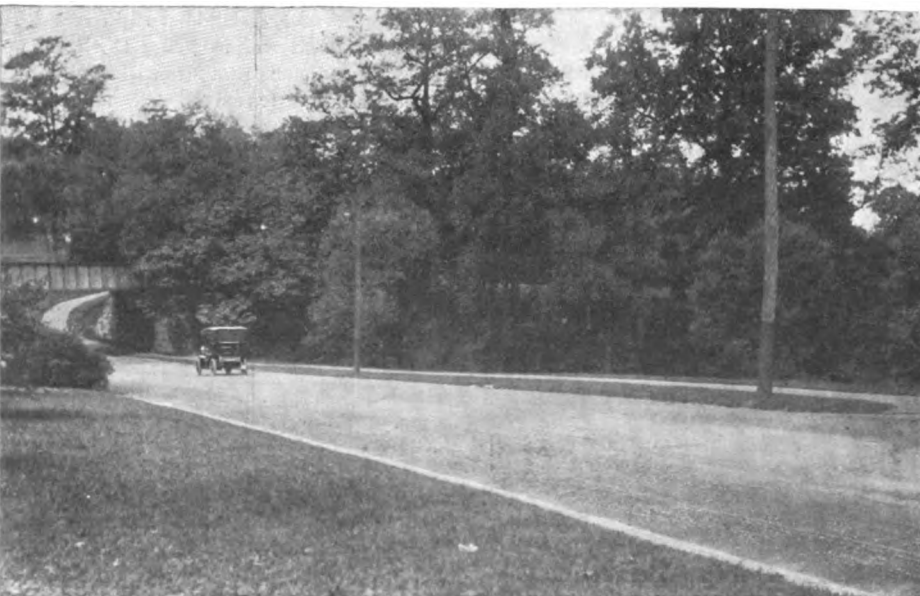
That the Q. C. M. C. committee was assured that the desired permission would be granted is evident from the fact that entry blanks were mailed to the manufacturers on the



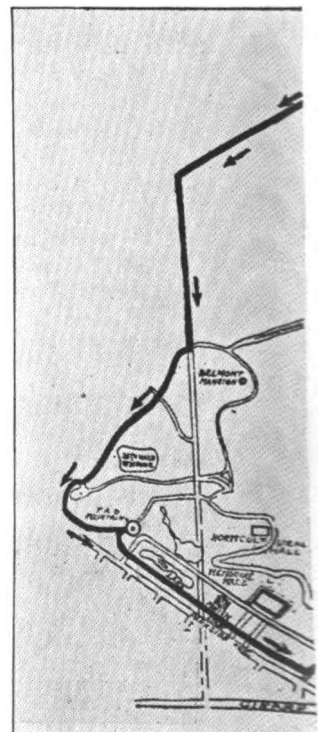
ON THE CONCOURSE—SMITH MEMORIAL TO CIVIL WAR SOLDIERS



URNS ON COURSE ARE GRADUAL AND WIDE



ON LANSDOWNE DRIVE, APPROACHING WEST RIVER DRIVE



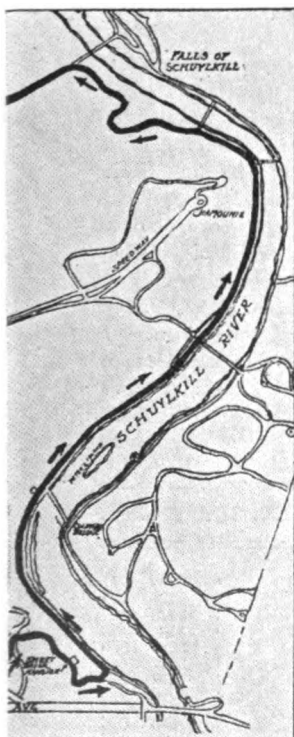
MAP OF PHILADELPHIA

Road Race Certainty

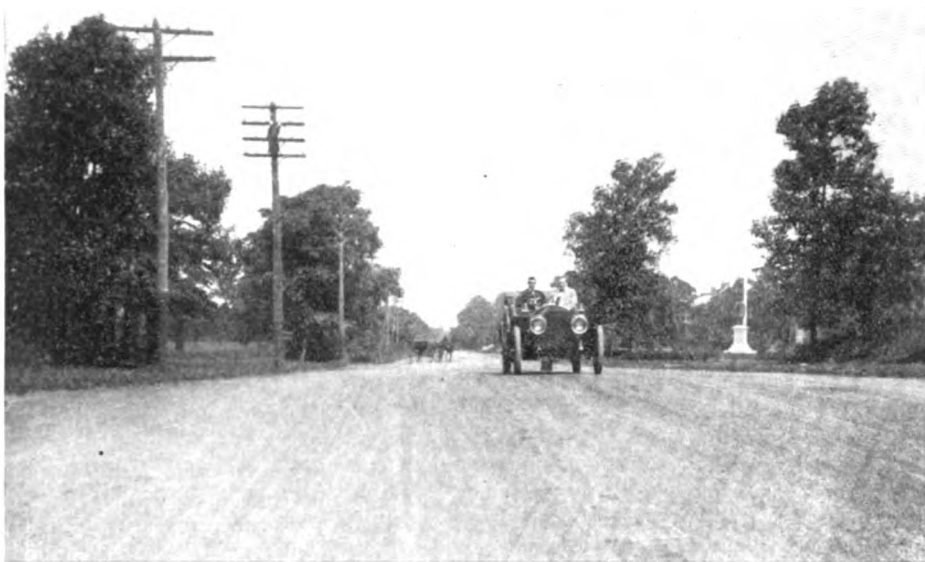
same day that the park commission granted the permit. The official title of the contest, which will be under A. A. A. rules, is "Founders' Week Stock Chassis Road Race," and it is open to any regular make of stock car, with a total piston area of at least 56.7452 square inches. Among the conditions are the following: Each car must be equipped with a hood, must be subject to examination by a technical board, and besides being of standard tread, must conform with all the specifications in current catalogs, barring mud guards, lamp brackets, running boards, etc. There will be no limit on the kind of tires and rims, but no anti-skid devices will be allowed. There will be no limit on the weight of the car or on the gear ratio. Shock absorbers may be used, at option of entrant; exhaust must be horizontal, either backward or through the side of the hood. The usual restrictions are provided for in the case of repairs and adjustments, extra parts, etc., and driver or mechanic, or both, may be changed, if necessary, during the contest. The entrance fee for each car is \$350, and the Quaker City Motor Club will refund \$100 for each car that makes a bona fide start. Owing to the short course not more than three cars of any one make will be accepted. The total number of cars that may be entered is twenty, and the first twenty will have the preference, the time of postmark to determine such.

Contestants are assured of a thoroughly protected course, the authorities having practically promised that the 10,000 or more troops that will be in the city during the week will be utilized for patrol purposes. All the turns will be banked, where necessary, although the extreme width of the road will render this unnecessary in most instances. The course will be thoroughly oiled and otherwise treated until an average of a mile a minute will be a possibility on the day of the contest. Entries will close October 7, with Secretary H. C. Harbach.

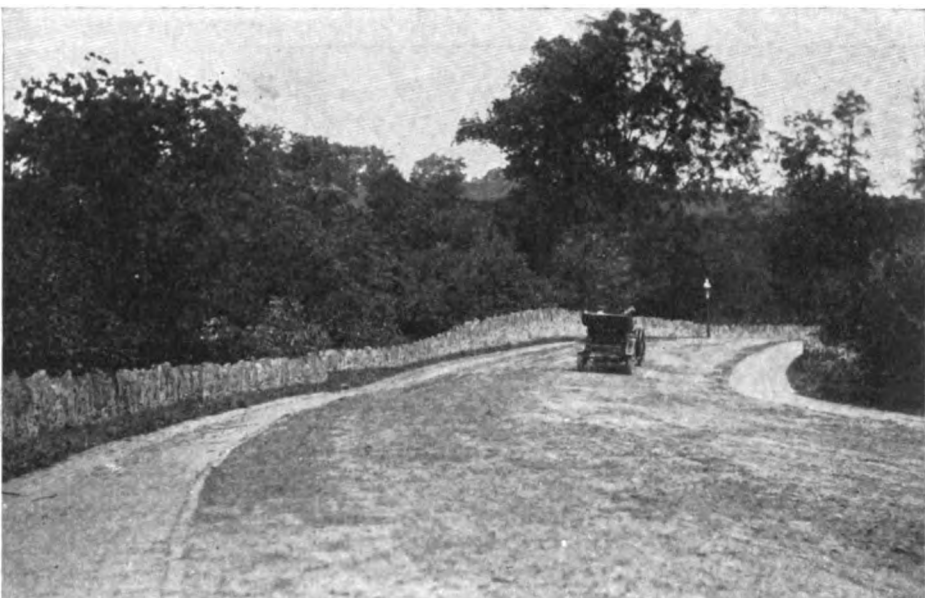
With the shortened course the interval between the starters will be reduced to 30 seconds, or possibly less. With the exception of about a mile on City Line avenue the course is sufficiently wide for half a dozen cars abreast.



PARK ROAD RACE COURSE



THE CONCOURSE—DOWN HOME STRETCH FROM FIFTY-SECOND STREET



NEILL DRIVE, THOUGH WIDE, IS QUITE TORTUOUS



ON NEILL DRIVE, APPROACHING CITY LINE ROAD