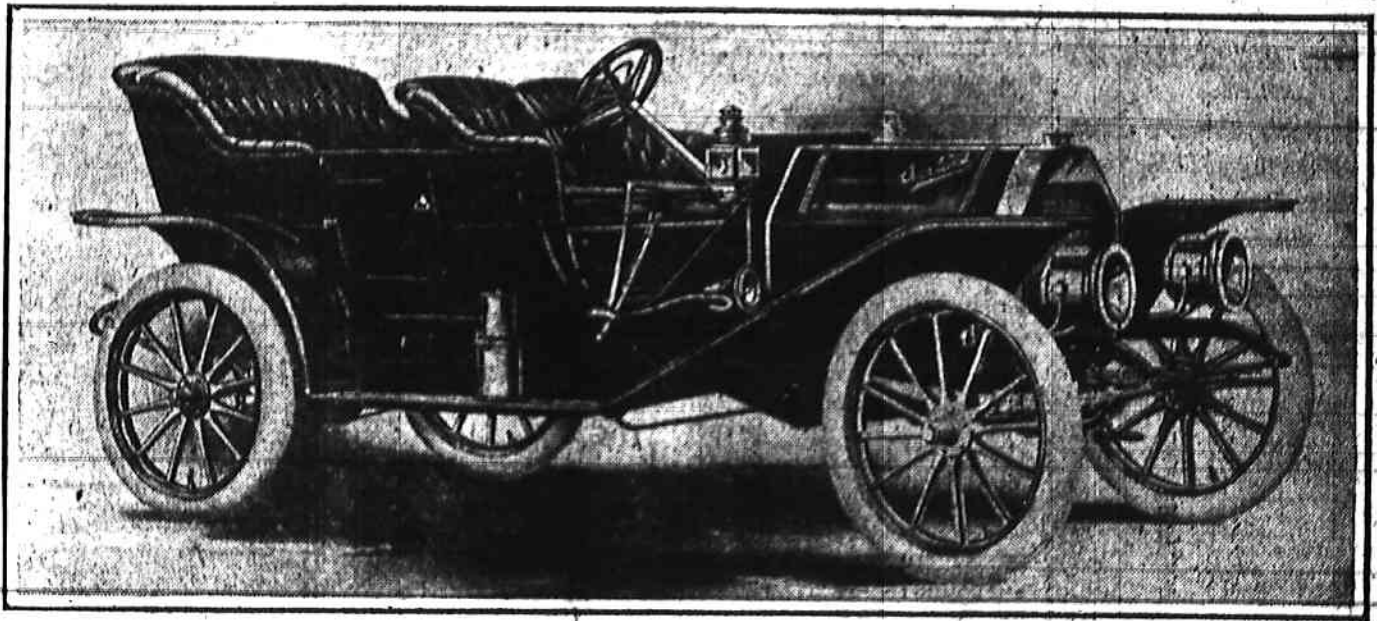


Arrived
The New 1910
Models of

Overland

\$1,000
TO
\$1,500

Magneto and Full Lamp Equipment Included



The classiest car in the field now on exhibition and deliveries being made

The Overland Company builds more Automobiles than any two factories in Indiana. The output for 1910 will be 20,000 cars, employing 5,000 men.

The Overland Company has purchased a new factory in Toledo, which is the largest and best equipped for building automobiles in the United States.

The Overland Company build all their parts, which insures prompt deliveries. Their increased wheel base, more power, better designed, larger and more roomy bodies, large wheels and large tires, elegant finish and careful workmanship require every one to inspect these cars before buying. A gold-plated Overland will be presented to the driver making the fastest mile in 1909 at the Indianapolis Motor Speedway. Call and see the different models on exhibition at

The Fisher Auto Company

State Agents

Vermont and Capitol Boulevard

**Good Races Show
America in Lead**

near he was to being beaten in the national stock chassis race at Lowell. On the smaller cars such pilots as Joe Matson, Billy Knipper and Ray Harroun have shown they are among the top notchers. Matson twice has come into the limelight and both times in big events. Knipper has earned brackets ing seven laps and had enough leeway to beat Bourque in the Knox by a minute for one of the biggest trophies of the year. Chevrolet's game, there's no denying it, and it is this characteristic, combined with his mechanical knowledge, that has made him the great driver that

LES
TTLE
Price
ces

SPUTED
Over
kes Up

as well as
ated, will
regarding
ontests of
will have
cents that
e months
er words:
ing auto-
idea - the
ation was
, will be
nally in-
ce its in-
dicup, in
had been
existing
manufac-
turity to
ss limits
eason that
when the
This lat-
e general
over the
pelled in
ere built
st class,
go into a
will have
By New
what the
us classes
on to go
to those
improb-
ston dis-
r will be
ractical-
g for su-
struction

tained. All efforts to work out improve-
ments in either direction have brought the
rules committee back to the classes as
they stand, which are generally favored
by the men most interested.
A section of the makers of automobiles
has advocated a class for cars with
greater piston displacement than is at