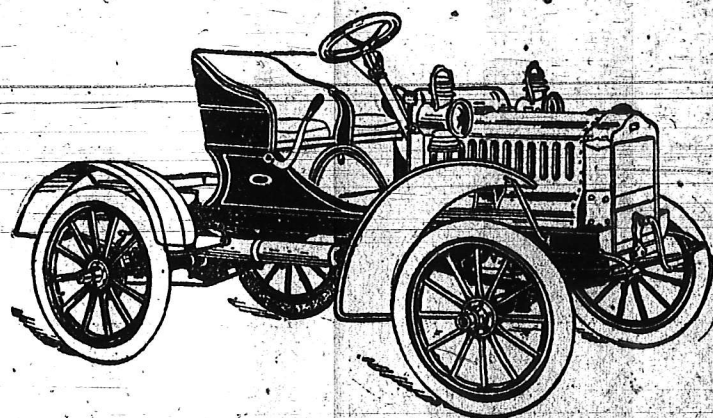


National

MODEL D 40 H. P. RUNABOUT \$2,900.

The latest model of the NATIONAL MOTOR VEHICLE COMPANY, an Indianapolis industry which has gained recognition as one of the World's greatest automobile manufacturers, not by an enormous advertising campaign, but on account of the supreme excellence of its product. The factory is booking orders for 1907 delivery only, but we have a few cars of our allotment yet unplaced which we can deliver in April and May.



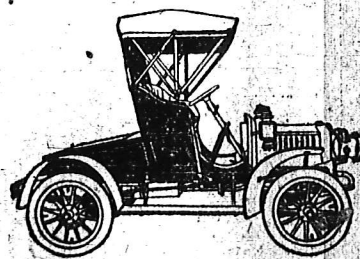
THE MAXWELL, GENTLEMEN'S SPEEDSTER
50 miles an hour, \$800.00

The "Maxwell"

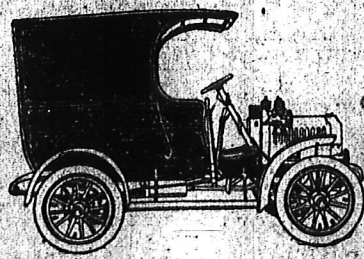
The Maxwell cars all embody the same general constructive features: **Engines in front**, instantly accessible for inspection or adjustment, and absolutely protected from dirt and dust. **Drive through propeller shaft and bevel gears** running in oil and enclosed in dust-proof cases. No filthy, noisy, chains. Chains are cheap for the manufacturer but expensive for the owner. All Maxwells have **pressed steel frames** and light **pressed steel bodies** which are practically indestructible and which take a high finish unaffected by exposure to weather.

The Maxwell has more power for its weight and price than any automobile built.

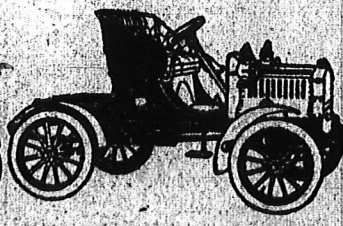
Call and see us, or write for catalogue.



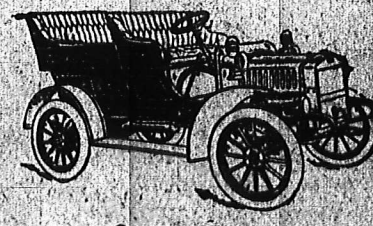
MAXWELL DOCTOR'S SPECIAL
20 H. P. \$1,375.



MAXWELL DELIVERY WAGON
20 H. P. \$1,400



MAXWELL RUNABOUT
10 H. P. \$780

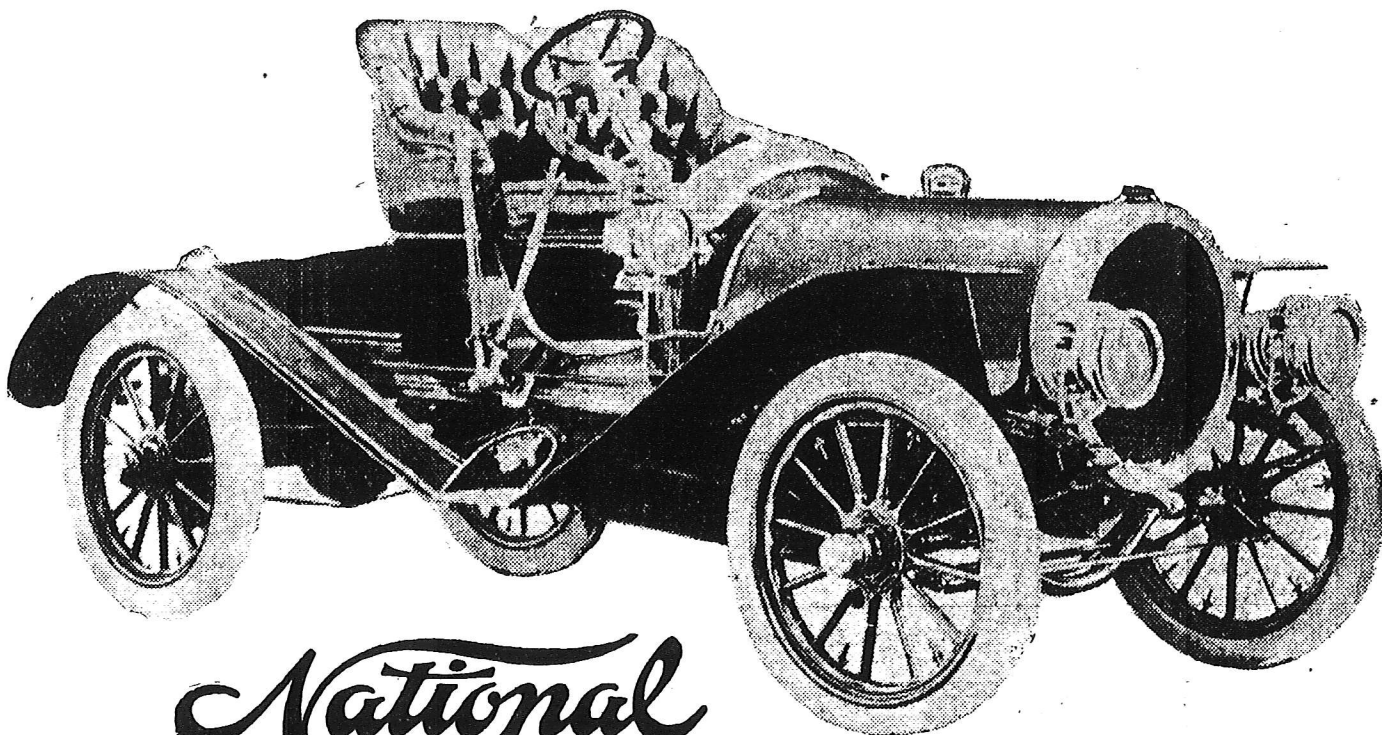


MAXWELL TOURING CAR
20 H. P. \$1,450.

FISHER AUTOMOBILE CO.

330 N. ILLINOIS STREET

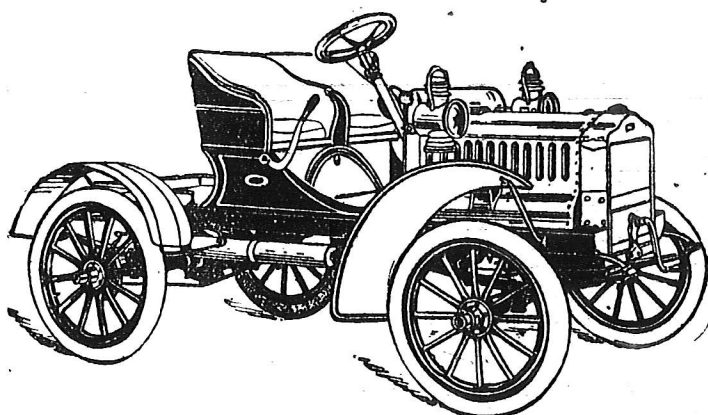
State Agents for National, Premier, Stoddard-Dayton, Maxwell Automobiles



National

MODEL D 40 H. P. RUNABOUT \$2,900.

The latest model of the NATIONAL MOTOR VEHICLE COMPANY, an Indianapolis industry which has gained recognition as one of the World's greatest automobile manufacturers, not by an enormous advertising campaign, but on account of the supreme excellence of its product. The factory is booking orders for 1907 delivery only, but we have a few cars of our allotment yet unplaced which we can deliver in April and May.



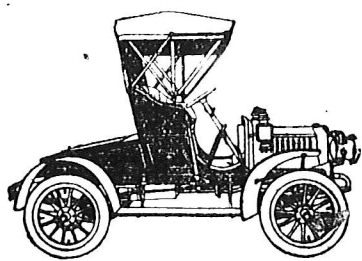
THE MAXWELL, GENTLEMEN'S SPEEDSTER
50 miles an hour, \$800.00

The "Maxwell"

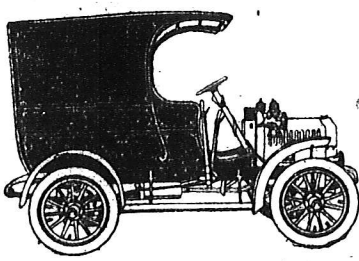
The Maxwell cars all embody the same general constructive features: **Engines in front**, instantly accessible for inspection or adjustment, and absolutely protected from dirt and dust. **Drive through propeller shaft and bevel gears** running in oil and enclosed in dust-proof cases. No filthy, noisy, chains. Chains are cheap for the manufacturer but expensive for the owner. All Maxwells have **pressed steel frames** and light **pressed steel bodies** which are practically indistructible and which take a high finish unaffected by exposure to weather.

The Maxwell has more power for its weight and price than any automobile built.

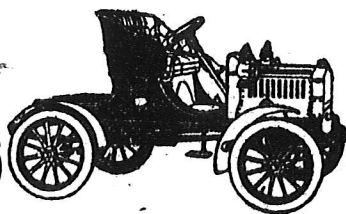
Call and see us, or write for catalogue.



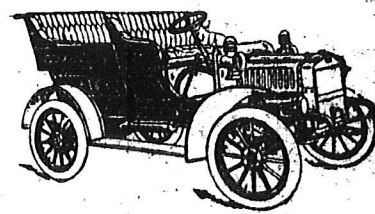
MAXWELL DOCTOR'S SPECIAL. 20 H. P. \$1,375.



MAXWELL DELIVERY WAGON
20 H. P. \$1,400



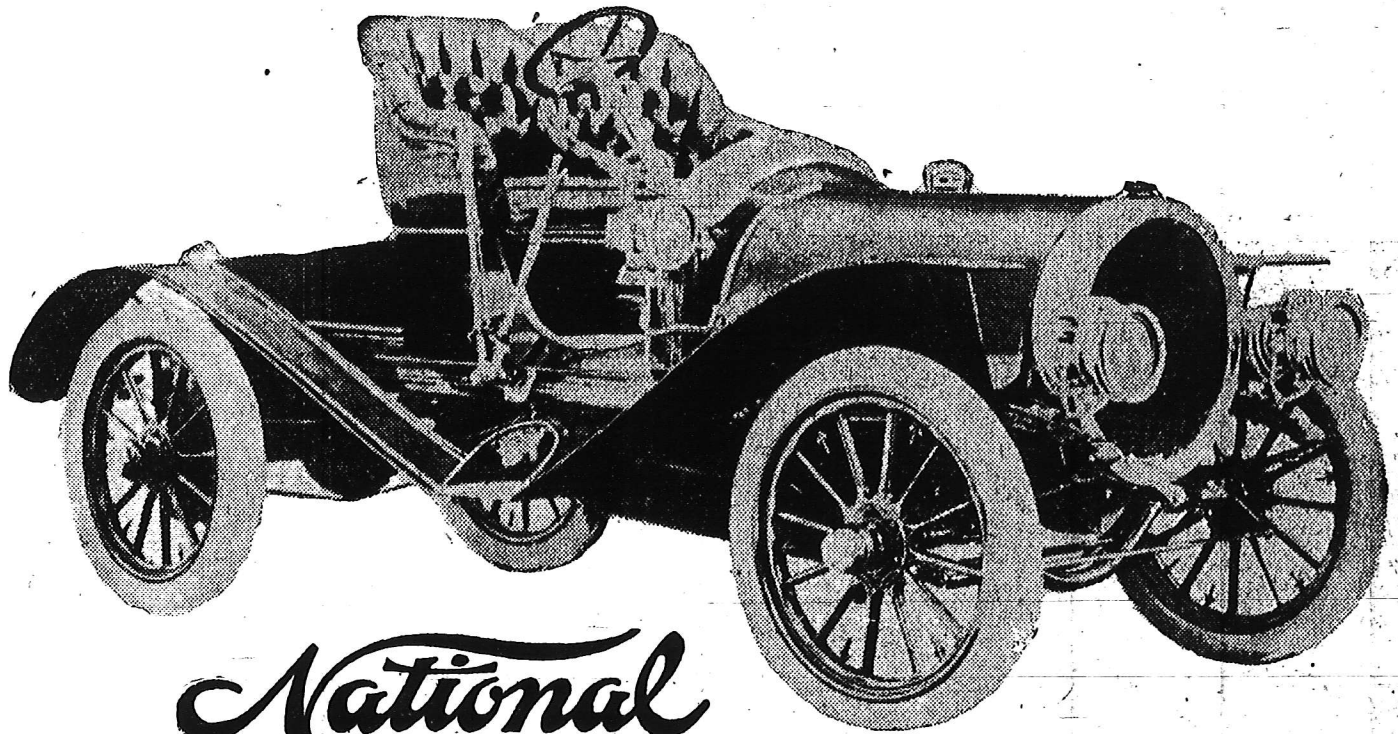
MAXWELL RUNABOUT
10 H. P. \$780



MAXWELL TOURING CAR
20 H. P. \$1,450.

FISHER AUTOMOBILE CO. 330 N. ILLINOIS STREET

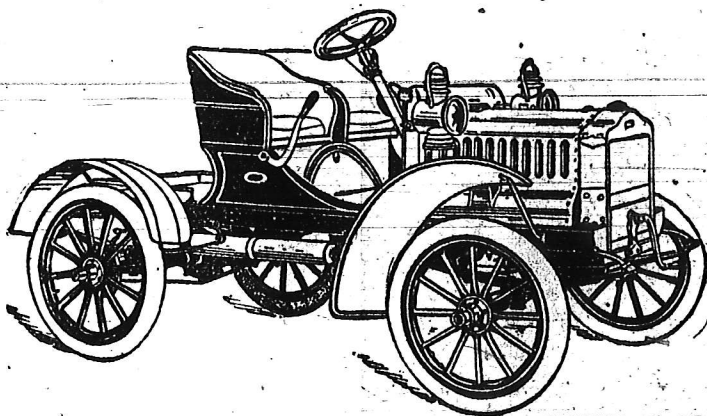
State Agents for National, Premier, Stoddard-Dayton, Maxwell Automobiles



National

MODEL D 40 H. P. RUNABOUT \$2,900.

The latest model of the NATIONAL MOTOR VEHICLE COMPANY, an Indianapolis industry which has gained recognition as one of the World's greatest automobile manufacturers, not by an enormous advertising campaign, but on account of the supreme excellence of its product. The factory is booking orders for 1907 delivery only, but we have a few cars of our allotment yet unplaced which we can deliver in April and May.



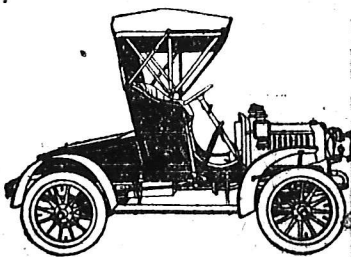
THE MAXWELL, GENTLEMEN'S SPEEDSTER
50 miles an hour, \$800.00

The "Maxwell"

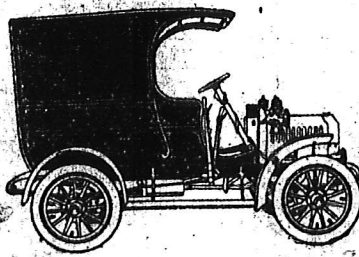
The Maxwell cars all embody the same general constructive features: **Engines in front**, instantly accessible for inspection or adjustment, and absolutely protected from dirt and dust. **Drive through propeller shaft and bevel gears** running in oil and enclosed in dust-proof cases. No filthy, noisy, chains. Chains are cheap for the manufacturer but expensive for the owner. All Maxwells have **pressed steel frames** and light **pressed steel bodies** which are practically indestructible and which take a high finish unaffected by exposure to weather.

The Maxwell has more power for its weight and price than any automobile built.

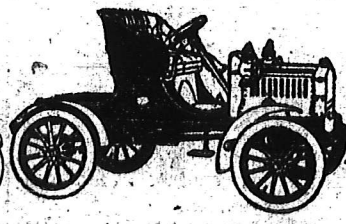
Call and see us, or write for catalogue.



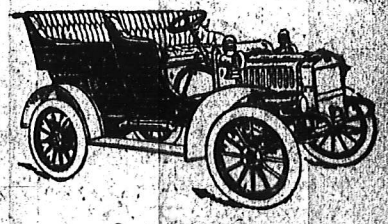
MAXWELL DOCTOR'S SPECIAL. 20 H. P. \$1,375.



MAXWELL DELIVERY WAGON
20 H. P. \$1,400



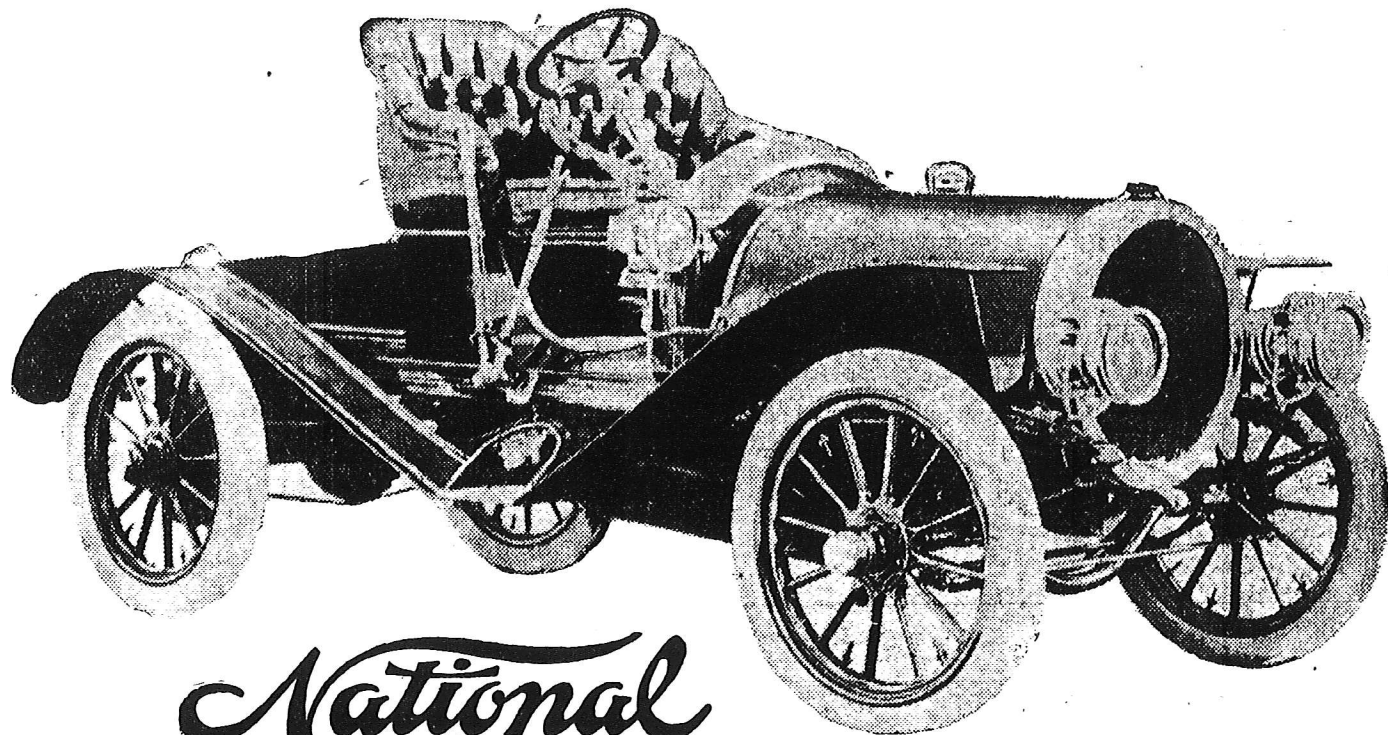
MAXWELL RUNABOUT
10 H. P. \$780



MAXWELL TOURING CAR
20 H. P. \$1,450.

FISHER AUTOMOBILE CO. 330 N. ILLINOIS STREET

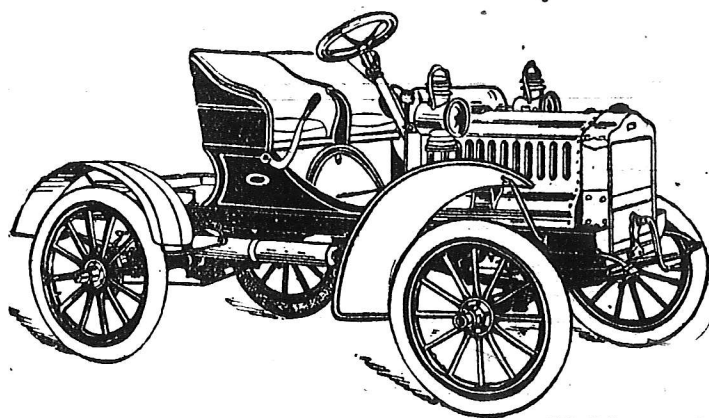
State Agents for National, Premier, Stoddard-Dayton, Maxwell Automobiles



National

MODEL D 40 H. P. RUNABOUT \$2,900.

The latest model of the NATIONAL MOTOR VEHICLE COMPANY, an Indianapolis industry which has gained recognition as one of the World's greatest automobile manufacturers, not by an enormous advertising campaign, but on account of the supreme excellence of its product. The factory is booking orders for 1907 delivery only, but we have a few cars of our allotment yet unplaced which we can deliver in April and May.



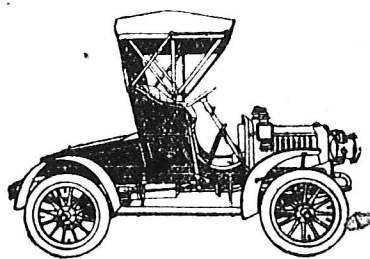
THE MAXWELL, GENTLEMEN'S SPEEDSTER
50 miles an hour, \$800.00

The "Maxwell"

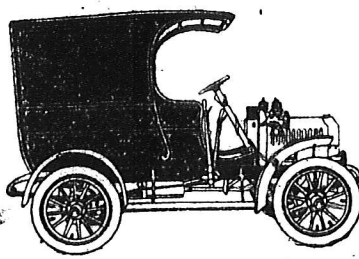
The Maxwell cars all embody the same general constructive features: **Engines in front**, instantly accessible for inspection or adjustment, and absolutely protected from dirt and dust. **Drive through propeller shaft and bevel gears** running in oil and enclosed in dust-proof cases. No filthy, noisy, chains. Chains are cheap for the manufacturer but expensive for the owner. All Maxwells have **pressed steel frames** and light **pressed steel bodies** which are practically indistructible and which take a high finish unaffected by exposure to weather.

The Maxwell has more power for its weight and price than any automobile built.

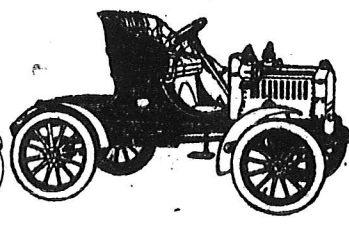
Call and see us, or write for catalogue.



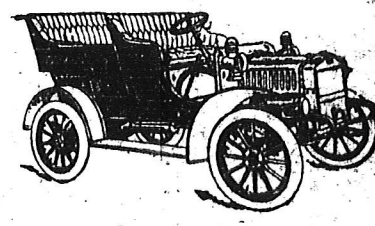
MAXWELL DOCTOR'S SPECIAL. 20 H. P. \$1,375.



MAXWELL DELIVERY WAGON
20 H. P. \$1,400



MAXWELL RUNABOUT
10 H. P. \$780



MAXWELL TOURING CAR
20 H. P. \$1,450.

FISHER AUTOMOBILE CO. 330 N. ILLINOIS STREET

State Agents for National, Premier, Stoddard-Dayton, Maxwell Automobiles