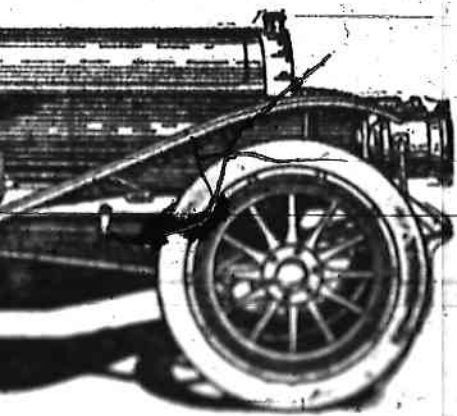


# R THE



## ay Races

## Distributor

Stock

4; Louisiana, 1; Maryland, 11; Alabama, 1; Arkansas, 8; Arizona, 1; California, 2; Colorado, 4; Connecticut, 8; Delaware, 1; Washington, D. C., 2; Florida, 4; Massachusetts, 10; Michigan, 7; Minnesota, 19; Mississippi, 1; Missouri, 1; New Jersey, 16; New York, 87; Ohio, 11; Oklahoma, 1; Oregon, 1; Pennsylvania, 29; Rhode Island, 1; South Dakota, 6; Tennessee, 5; Texas, 3; Utah, 1; Vermont, 1; Virginia, 3; West Virginia, 3; Wisconsin, 7.

### DRIVERS OBEY FLAG SIGNALS

#### Dare-Devil Auto Racers Receive Instructions From Banners.

Fred J. Wagner of New York, who has acted as flagman for almost all of the big automobile races, will wave the flags here this week at the Speedway. Large silk banners have been procured and the following is the code:

Red flag, clear course; yellow flag, stop immediately; green flag, starting last lap; checkered flag, you are finished; white flag, stop for consultation.

The technical committee and management are final judges in the application of rules, and reserve the right to themselves to make such modifications as subsequent events may, in their judgment, necessitate.

Protests must be made in writing and delivered to the technical board of management within twenty-four hours after the conclusion of a race. Protests will not be considered unless accompanied by the sum of \$100, which will be refunded to any protestant only in case the protest is sustained. Protests against a competitor's car starting must be made at least ten minutes before the car is ready to start to be good.

Disputing officials' instructions on the subject of the protest and the procedure...

...of which were made...

Offer Long Str

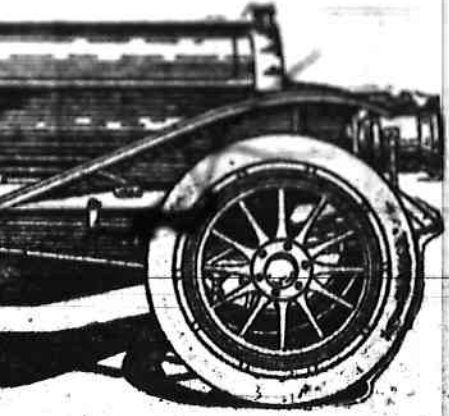
"The length of one lap is two and eleven-sixteenths accurate, 2.76687774 miles, all there would be left of stretch of beach after 'allings.' But including the stretch, the circuit comes upon three and a quarter

"In the maintenance of motordrome a small army constantly employed. The built on the estate of H. from whose residence, 'I track takes its name. To from the high road after grounds is considerable quite a tricky drive by car has been cut out of the h no end of twistings, su climbs and hairpin turns skill of the average driver. On race days men are sta corners and turns, wig-w prevent cars coming from tions colliding. These, with ers and others employed a constitute a goodly staff employes.

"A tunnel under the allows access to the inte closure, where the padd and administration office. As yet Brooklands lacks touch of a clubhouse like of Empire track. But th closure and grand stand of the remnant of the hill the great track cars, are bridge over the track of dock across the 'straight' Recently a strip of the pr Brooklands has been covered of which were made

...of which were made...

R THE



ay Races

Distributor

Street

DRIVERS OBEY FLAG SIGNALS

Devil Auto Racers Receive Instructions From Banners

Fred J. Wagner of New York, who has acted as flagman for almost all of the big automobile races, will wave the flags here this week at the Speedway. Large silk banners have been procured and the following is the code:

Red flag, clear course; yellow flag, stop immediately; green flag, starting last lap; checkered flag, you are finished; white flag, stop for consultation.

The technical committee and management are final judges in the application of rules, and reserve the right to themselves to make such modifications as subsequent events may, in their judgment, necessitate.

Protests must be made in writing and delivered to the technical board of management within twenty-four hours after the conclusion of a race. Protests will not be considered unless accompanied by the sum of \$100, which will be refunded to any protestant only in case the protest is sustained. Protest against a contesting car starting must be made at least twelve hours before the car is ready to start in an event.

Disobeying official instructions or flag signals on the course shall disqualify.

JUST ALIKE.

How much like an auto  
A maiden may be;  
She'll spark or she'll stall  
With ill-concealed glee.  
And then, plunged in fashion  
"Way up to the hill,  
It's they—such women  
That don't break hills.

length of one lap...  
seven...  
2,700...  
would be left...  
at track after...  
but including...  
the circuit...  
and a quarter

In the maintenance of...  
some a small army...  
employed. The...  
the estate of H...  
from whose residence...  
track takes its name. To...  
from the high road after...  
grounds is considerable...  
quite a tricky drive by...  
has been cut out of the...  
no end of twistings, su...  
climbs and hairpin turn...  
skill of the average driver...  
On race days men are sta...  
corners and turns, wig-w...  
prevent cars coming from...  
tions colliding. These, with...  
ers and others employed a...  
constitute a goodly staff...  
employees.

"A tunnel under the...  
allows access to the inte...  
closure, where the paddo...  
and administration office...  
As yet Brooklands lacks...  
touch of a clubhouse like...  
or Empire track. But the...  
closure and grand stand...  
of the remnant of the hill...  
the great track runs, are...  
bridge over the track or...  
dock across the 'straight'  
Recently a strip of the ori...  
inclosure has been conver...  
climb—of which more late

Can Not See All o

"Visitors to Brooklands...  
motor track racing in An...  
fall to be impressed with...  
back in the construction...  
lands track, from the spec...  
view. There is no place wh...  
all the race. And at the on...  
one might see the racers...  
the track itself is out of...  
behind the hill. These are...  
wholly...  
...  
...