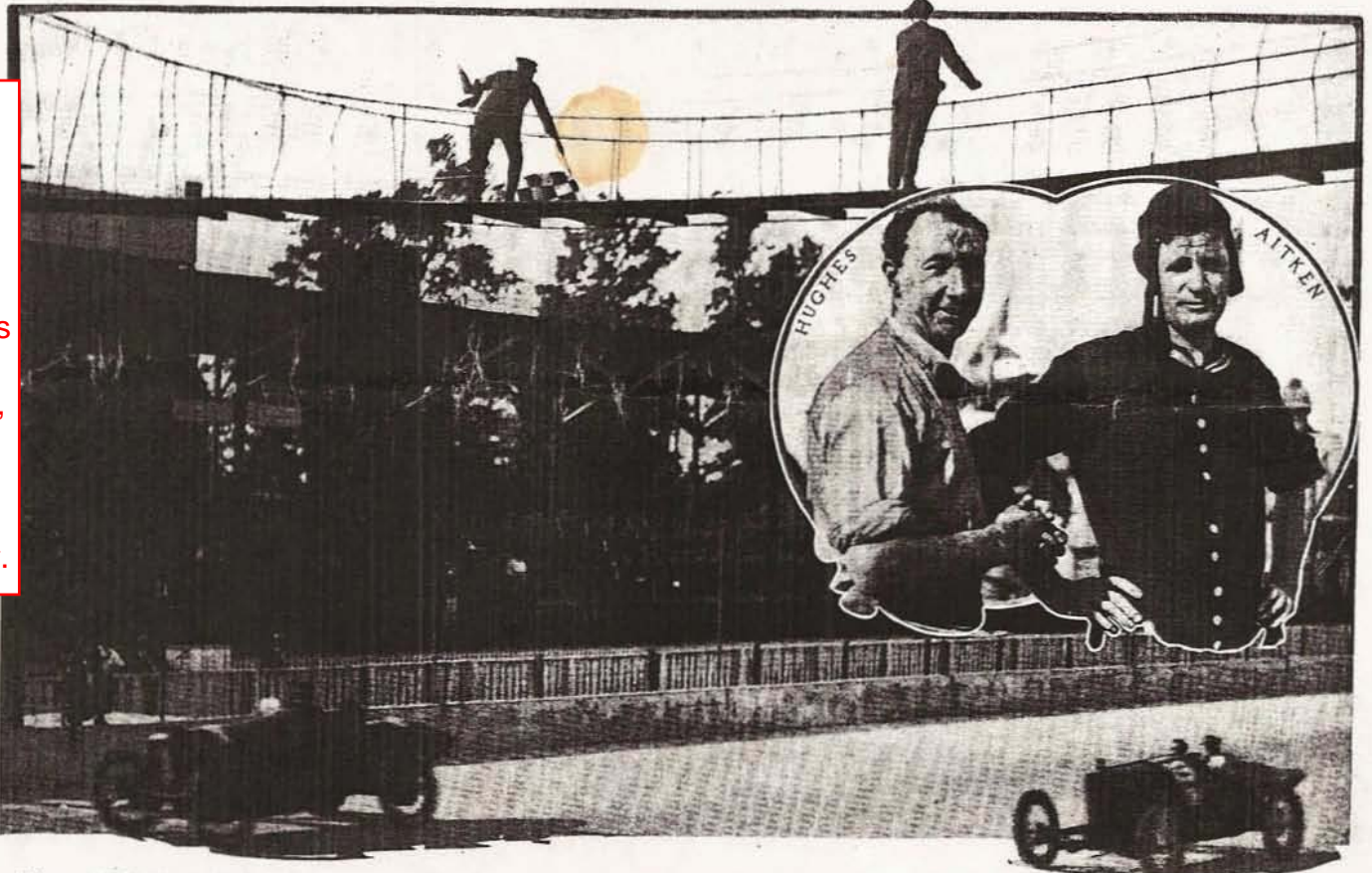


Peugeot,
Hoskins,
Sunbeam,
Dusenber,
Premier.
Hughie
Hughes, Louis
Chevrolet,
Charley Merz,
Tom Rooney,
D'Alene,
Eddie
Rickebacker.



Aitken and Hughes finishing 50-mile race. Hughes was only .27 second behind the winner. Insert shows Hughes and Aitken just after their sensational finish

Aitken Sweeps Indianapolis Card

All Three Events Closely Contested—Winner Drives 8 Miles with Broken Steering Arm

By William K. Gibbs

INDIANAPOLIS SPEEDWAY, Sept. 9— Fate was good to Johnny Aitken today. Going into the 100-mile event, the third on the card, after having taken both the 20-mile and 50-mile dashes, his Peugeot showed the way, and with the confidence gained in his two earlier wins, Aitken jumped into the lead. However, Rickenbacher had kept his Maxwell out of the first two races, purposely to save it for the one in which points towards the season's championship were to be awarded. Aitken found Rick crowding him hard and it was a battle royal between the two, who paced the field and kept well in the lead most of the time throughout the race.

Aitken led, but never for more than 100 feet, up to the end of the twenty-third lap, when Rick plunged out in front for one circuit of the track, Aitken heading him on the next circuit. Johnny held the lead until the thirty-third lap, then Rick lead for one circuit, Aitken going into the lead again for two laps, or up to the 90-mile

post. It was on the next lap after this that the steering arm on the right wheel of the Peugeot broke and Rick began to walk away from Aitken as if the latter were tied. Pit attendants signalled Rick to watch his right rear wheel, which was wobbling considerably and proved his undoing just when victory seemed within his reach, for Aitken was in serious trouble. With but little more than 5 miles to go and when he was leading Aitken by almost a mile, Rick came out of the west turn into the homestretch at high speed and his right rear wheel dished and this caused the left rear tire to go. Much credit is due Rickenbacher for his masterly control of the Maxwell under

TIMES FOR THE 20-MILE EVENT

Car	Driver	10 ml.	20 ml.	Speed	Prize
Peugeot.....	Aitken	6:26.54	12:37.35	95.08	\$400
Premier.....	Wilcox	6:28.94	12:37.68	95.03	300
Sunbeam.....	Chevrolet	6:41.65	13:12.88	90.82	200
Hoskins.....	Hughes	6:55.36	13:36.90	88.04	100
Premier.....	Lewis	7:09.80	14:03.85	85.33	
Peugeot.....	De Palma	7:16.00	14:04.62	85.24	
Duesenberg.....	Buzane	7:10.90	14:11.34	84.58	
Ostewig.....	McNey	7:32.96	15:52.18	75.60	

Henderson and Klein both out early.

TIMES EVERY 10 MILES IN THE 100-MILE EVENT

Car	Driver	10	20	30	40	50	60	70	80	90	100	Speed	Prize
Peugeot.....	Aitken	6:29.92	13:04.37	19:47.75	26:31.93	33:16.90	39:59.40	46:39.99	53:25.25	59:51.84	1:07:05	89.44	\$3,500
Hoskins.....	Hughes	6:43.69	13:27.15	20:14.17	27:17.80	33:58.45	40:38.54	47:22.20	54:08.60	1:00:50.24	1:07:24	89.01	2,000
Duesenberg..	D'Alene	6:45.54	13:34.96	20:12.72	26:52.89	33:35.53	40:13.47	46:52.28	53:40.88	1:00:40.73	1:07:43	88.60	1,200
Duesenberg..	Buzane	7:02.21	13:57.45	21:07.62	27:59.80	34:44.50	41:32.28	48:21.45	55:06.66	1:01:47.54	1:08:37	87.44	1,000
Premier.....	Lewis	7:01.31	13:47.76	20:33.71	27:17.34	34:01.39	40:50.44	48:49.89	55:31.21	1:02:17.71	1:09:07	86.81	600
Omar.....	Toft	7:16.90	14:28.15	21:59.34	29:16.93	36:30.75	43:48.13	51:07.40	58:24.30	1:05:35.19	1:12:40	82.56	400
Maxwell.....	Henderson	7:06.88	14:11.75	21:37.21	28:58.89	36:18.78	42:42.84	51:03.57	58:22.70	1:05:36.41	1:12:43	82.51	300
Peugeot.....	De Palma	7:01.66	13:56.60	21:06.65	27:58.17	34:43.30	41:32.28	48:21.45	55:06.66	1:05:36.41	1:12:43	81.96	
Maxwell.....	Rickenbacher	6:30.37	13:04.93	19:48.56	26:32.36	33:17.44	39:59.72	46:40.59	53:25.85	59:52.27	Wrecked 38th lap.		
Ostewig.....	McNey	7:49.17	15:49.76	23:51.30	31:57.30	39:42.68	47:45.68	55:36.35	1:03:37.71	Flagged 36th lap.			
Premier.....	Wilcox	6:56.48	15:22.58	21:59.62	29:50.90	Out 8th lap.	Quit.						
Duesenberg..	Milton	6:50.56	14:04.46	Out 8th lap.	Ignition trouble.								

RICKENBACHER ONLY RAN IN 100 MILE

Equipment Used in Indianapolis Harvest Racing Classic

Car	Driver	No. Cyl.	Bore	Stroke	Distance	Carb.	Plugs	No. Plugs	No. Valves	Valve & Open	Make	Size	WT.	Pistons	Oil
Peugeot	de Palma	4	3.70	6.65	274.0	Zenith	K L G	4	16	Over	Silvertown	35x5	106	Aluminum	Oilzum
Premier	Wilcox	4	3.65	6.63	274.5	Miller	K L G	4	16	Over	Goodyear	35x5	105	Magnalium	Oilzum
Omar	Toft	4	3.75	6.75	298.2	Miller	Rajah	8	16	Side	Silvertown	35x5	106	Magnalium	Oilzum
Peugeot	Aitken	4	3.65	6.65	274.0	Zenith	K L G	4	16	Over	Silvertown	35x5	106	Aluminum	Oilzum
Maxwell	Rickenbacher	4	3.75	6.75	298.2	Miller	K L G	4	16	Over	Silvertown	35x5	106	Aluminum	Castor
Duesenberg	D'Alene	4	3.75	6.75	298.2	Miller	Rajah	8	16	Side	Silvertown	35x5	106	Magnalium	Oilzum
Maxwell	Henderson	4	3.75	6.75	298.2	Miller	K L G	4	16	Over	Goodyear	35x5	106	Aluminum	Castor
Sunbeam	Chevrolet	6	3.28	6.14	294.2	Miller	K L G	6	24	Over	Silvertown	35x5	113	Alum. Al.	Castor
Duesenberg	Milton	4	3.75	6.75	298.2	Miller	Rajah	8	16	Side	Silvertown	33x5	106	Magnalium	Oilzum
Duesenberg	Buzane	4	3.75	6.75	298.2	Miller	Rajah	8	8	Side	Silvertown	33x5	106	Aluminum	Oilzum
Duesenberg	Klein	4	3.75	6.75	298.2	Miller	Answer	8	16	Side	Silvertown	33x5	106	Magnalium	Mobiloil
Hoskins	Hughes	4	3.75	6.75	298.2	Miller	Rajah	8	16	Side	Silvertown	35x5	106	Aluminum	Monog'm
Premier	Lewis	4	3.65	6.63	274.5	Miller	K L G	4	16	Over	Silvertown	35x5	105	Magnalium	Oilzum
Ostewig	McNey	4	3.34	5.00	295.2	Miller	Rajah	8	16	Side	Silvertown	33x5	102	Magnalium	Oilzum

All used Moto-Meters and all cars were equipped with Hartford shock absorbers. All used Bosch ignition, except Chevrolet, who was Thomson equipped. R-W. wheels for all except Ostewig, Rickenbacher and Henderson, who used Houk.

these conditions. His car careened first right, then left, then right again, and just when four cars seemed about to hit him broadside, for he was directly across the track, Maxwell began sliding backwards and just in the nick o' time gave the right of way to the cars bearing down upon it. Riek and his mechanic, George Henderson, were in their seats when the car came to a standstill and the cheers that greeted them as they walked to the pits was equal to that usually accorded any winner. Aitken drove the last 8 miles with only one front wheel attached to his steering apparatus.

Indianapolis appeared to have been surfeited with entertainment, the state fair having closed yesterday, for there did not seem to be over 10,000 to 12,000 present at the races, which were the fastest ever seen on the Indianapolis track up to the time Aitken broke his steering arm and had to slow down. At that the 100-mile dash was considerably faster than the 300-mile event last Memorial day and nearly equaled de Palma's speed when he won last year. The 20- and 50-mile events were won at 95.08 and 91.83 miles per hour, respectively.

The 100-mile race was characterized by two battles, that of Rickenbacher and Aitken and one between D'Alene and Hughes. From the thirtieth to the ninetieth mile Hughes had been fighting D'Alene for third place and when Rickenbacher wrecked, Hughes jumped into Riek's place, passing D'Alene in the home stretch.

Buzane Moves Up

George Buzane, one of the surprises of the Cincinnati derby, where he won fourth place, repeated today in the 100-mile event. He had the pole position at the start, having drawn No. 1, but was soon in eighth place after the race started. However, at the end of 20 miles Milton docked his Duesenberg with ignition trouble and Buzane jumped into seventh place just inside the prize money. De Palma's and Lewis' stops for tires at the 72-mile point gave Buzane fifth position and the falling of Rickenbacher put him in fourth where he finished.

In the 20-mile event Aitken took the lead from the start and won at 95.08 miles per hour, although Wilcox gave him a hard battle, finishing only .33 second behind.

Chevrolet drove the Sunbeam that Galvin took third money in at Cincinnati last Monday and finished third.

In the 50-mile dash Wilcox in a Premier led the field for six laps, then gave way to Aitken. Hughes led the field in the fifteenth lap but relinquished it to Aitken after one circuit of the track but crowded the Peugeot close and finished .27 second behind Aitken.

It was an afternoon of spectacular finishes for each race. Not more than a car length decided between first and second places in the 20- and 50-mile events and then in the 100-mile race Aitken stopped at the first pit on his last lap, coasting across the line as he got the checkered flag. Ralph de Palma, who drove Merz's Peugeot, kept running, but said after the race that the

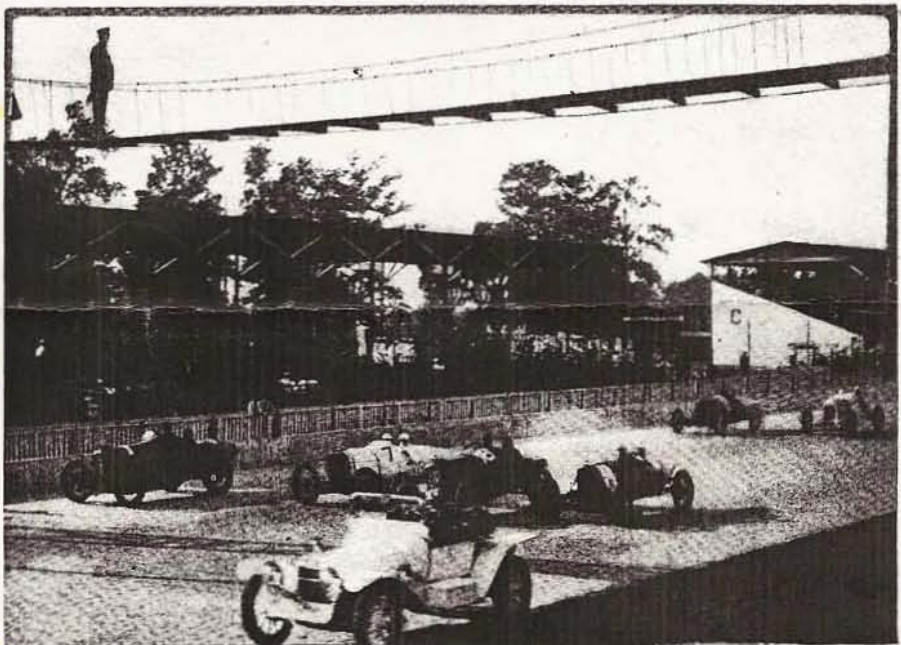
cars seemed to want to climb over the outside rail all the time. It seemed odd to see de Palma in the Peugeot blue; it made one lonesome for the Mercedes, which was too badly broken at Cincinnati last Monday to participate here. Christiaens did not start, his Sunbeam having broken the crankshaft in practice. All finishing inside the money made no tire changes except Lewis who put on a left rear and left front in the 100-mile race.

Tom Rooney, who was injured in the Indianapolis race last Memorial Day when his Premier overturned, watched the race from a car immediately back of Aitken's pit. It was his first day out of the hospital. He has had his left leg rebroken twice in an effort to get the bones to knit properly.

TIMES FOR 50-MILE EVENT

Car	Driver	10	20	30	40	50	Speed	Prize
Peugeot	Aitken	6:36.92	13:11.19	19:42.45	26:12.91	32:40.33	91.83	\$700
Hoskins	Hughes	6:37.50	13:11.95	19:44.42	26:14.60	32:40.61	91.81	500
Sunbeam	Chevrolet	6:37.26	13:12.58	19:44.95	26:15.03	32:41.10	91.79	400
Duesenberg	D'Alene	6:38.38	13:19.33	20:00.40	26:38.57	33:25.85	89.75	300
Premier	Lewis	6:57.92	13:43.96	20:31.52	27:12.70	34:05.46	87.99	100
Duesenberg	Wilcox	6:36.55	13:11.19	20:55.68	28:44.00	35:24.89	85.12	
Duesenberg	Buzane	7:14.60	14:15.67	21:25.55	28:25.68	35:32.87	84.44	

Out—Dirty plugs—7th lap.
Out—Dirty plugs—7th lap.



Start of the 100-mile race. Carl U. Fisher paced the field for one lap

CLOSE FINISH IN 50 MILE R

RICKENBACHER WRECK

STATE FAIR RACE ATTENDANCE

DE PALMA IN MERZ PEUGEOT

TOM ROONEY - BROKEN LEG