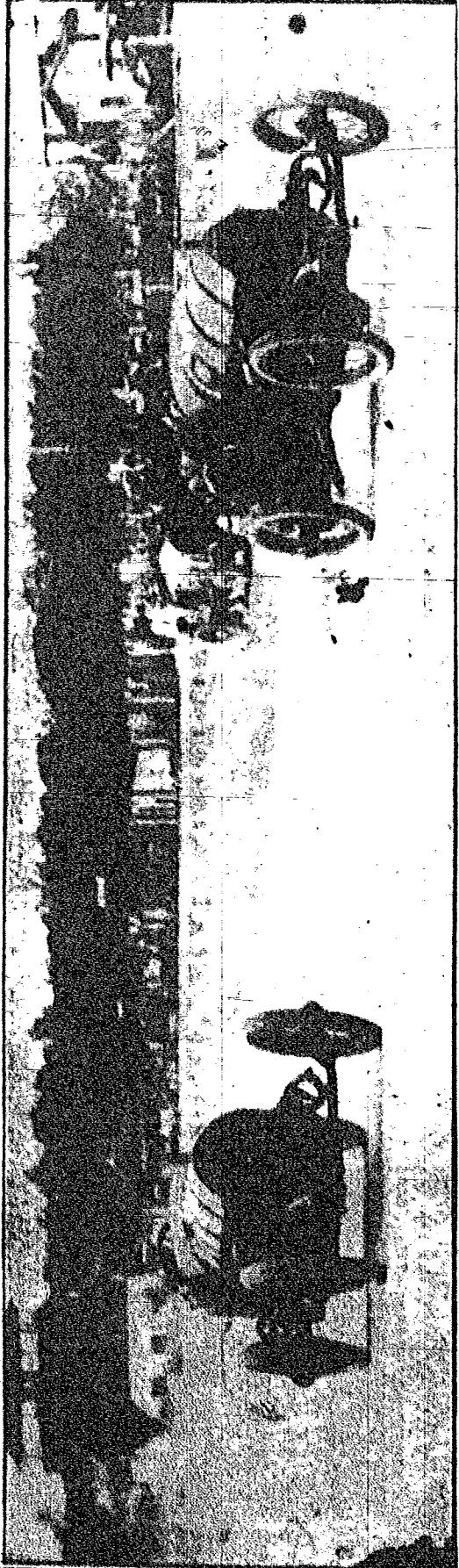


GREAT DRIVERS PRACTICE IN SETTING PACE AT SPEEDWAY



RALPH DE PALMA, IN MERCURET

Both DePalma's and Wishart's Mercures (the two boys were placed at setting the pace for each other in Palma's at was experienced in getting the requisite with the 2,700 of De Palma's. The latter are showing fast time in their tryouts running in third speed and Wishart's in speed in second. The limit of the car in car with Briggs is about the heaviest at the speedway, hitting ninety miles an hour. The Palma says he expects to drive the car in 100 miles an hour. All of them are expected with ease. The brush shown in the photograph was caught when Willard, hence has eager to make a strong showing, particularly in the race. The brush is some of the lightest weight record of the great accompanying photograph was caught when Willard, hence has eager to make a strong showing, particularly in the race. The brush is some of the lightest weight record of the great

GUNBOAT AND WILLARD AWAIT CALL OF REFEREE

CAN NOT BE KNOCKED OUT

IRVINGTON BUGS WATCH UMPIRE GET IN BAD

**IT ARE
RKOUTS**

**SH CARS
CK.**

PEEDWAY

able looking
er, its egg
concerned,
to be that
bullet. Its
fact that
ous for its
the other
as thin and
distance cer-
ny of the
ts of a fever
e, saying
t to make
particularly
f the oval,
able them
ights ways
As to
think they
get in the

**NINE F
IN**

**TWELVE
C**

JINX A

After the
the of the
Alamo
the start
Sunday
of the sta
F. I. W
committee
the men
the time
The off
Wishart
ing sheets
mail. The
is E. J.
dians, Ha
Soumes
F. Jacob
V. O. Sta
maker. In
Resides
have regis
every chec
other men
herd, on a
probability