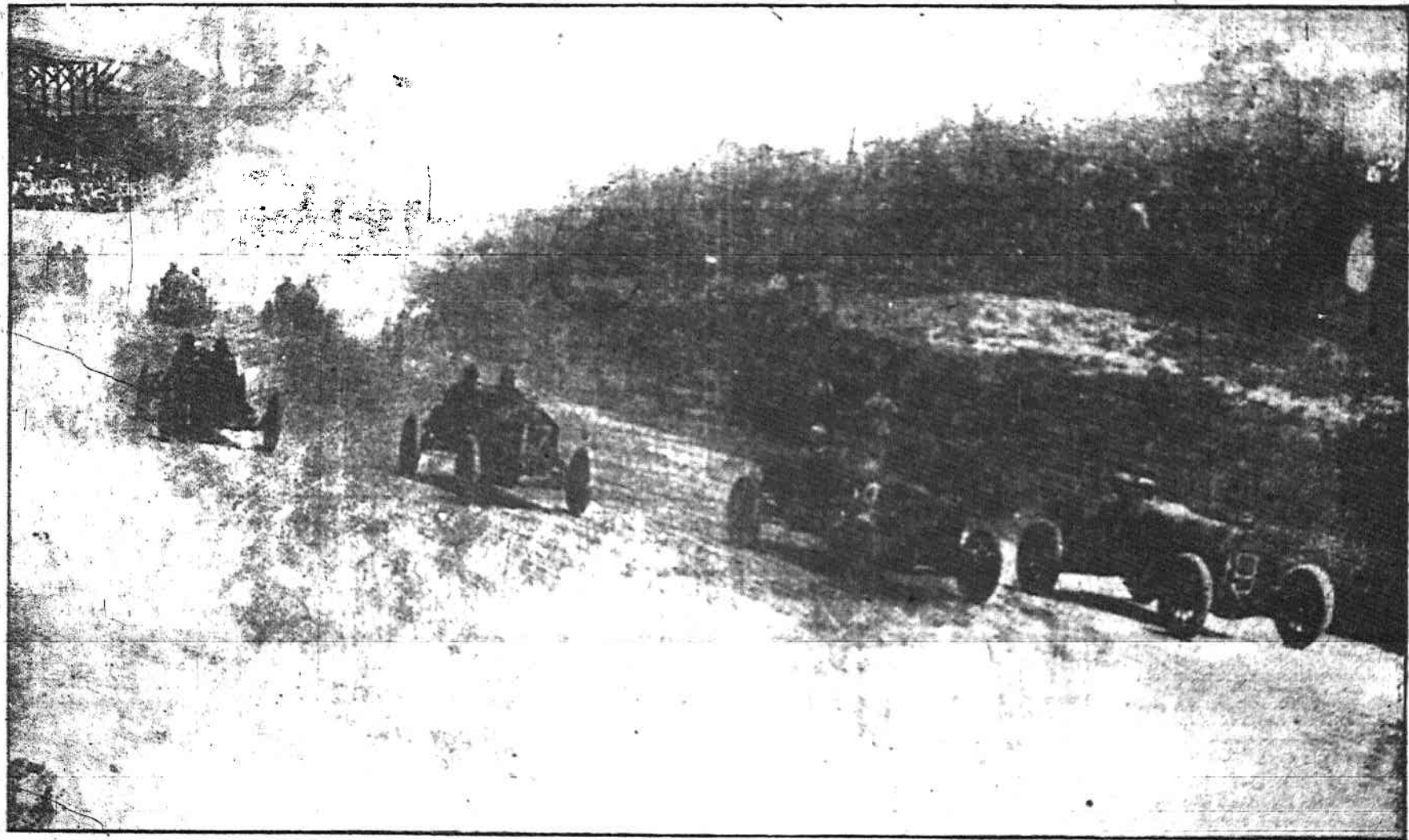


down the steps of the city auditorium and suffered a broken neck. B. F. Moore, of Fuqua, Tex., who had a fall Wednesday, died in a local infirmary of his injuries.

BURMAN Keeton
Burman had had luck early in the race, but he came back and was doing sensational driving this afternoon.

a part of the spectators to the speedway. From early in the morning until the middle of the forenoon, the routes from the downtown part of the city to the speed-

THE WAY THEY LINED UP AT THE START



Right to Left: Mercedes, No. 10; Buick, No. 11; Mason, No. 12; and No. 13.

AFTER THE SPEEDWAY GATES WERE OPENED



Quit ra

hundred-mile r
the streets the
Hotel lobbies w
ity, in spite of
heavy road tra

22,000

At 10:30 Henry
ticket selling
checked up on
found that 22,0
trains had bee
however, that n
trains without
trains arriving
ing the speedw
the sheds.

At 11 o'clock t
Chicago division
tive charge of t
said at that ti
gone to the sp
ated of eight
the station wa
about 10:30, aft
of corners rapid
From that hour
out of the stati
together eight t
care of the bus

Last Year

Mike Rafferty
who has seen th
as a policeman
tion that the c
the station exce
through the s
length of time

A great deal
gle at the stati
the unrest that
the speedway, f
med," as the s
Many of the vi
station, which
take care of su
the city on a s

The "Jimmy
ing to railroad
that the passen
sufficient to tak
ber of trains in

No Room

At times the t
occupied by re
which had just
trains were be
just the time t
taken to the sp
the movement
blocked. This
presence of spe
the shuttle tra
speedway, but
trains in the sh
to the station.

Impatient at t
other delays we
the crowds coul
from 5:30 until