

PERENNIAL CROPS OF COTTON IN TORREON

Mexican City Is Great Center of Railways and State Is of Vast Resources

WASHINGTON, July 14.—Torreon, the scene of a recent violent outbreak by Mexicans against American residents, is the subject of a geography bulletin issued in Washington by the National Geographic Society. This town of 35,000 inhabitants, which resembles a thriving American manufacturing center, is thus described: "In the midst of one of the most fertile agricultural districts of Mexico, and enjoying the advantage of railroad connections north, south, east and west, Torreon has enjoyed a phenomenal growth during the last 20 years. The city is situated on the southwestern edge of the border state of Coahuila, only a few miles from the rich mining state of Durango. Here the Mexican Central Railway and the Mexican International cross. By the former it is 519 miles to the Texas border at El Paso, and by the latter 383 miles to Eagle Pass. Mexico City lies 707 miles to the southeast. The nearest port to the American border is due north of Torreon, about 239 miles in an air line. The city of Durango is 150 miles to the southwest by rail, and Tampico, on the Gulf of Mexico, is 550 miles to the southeast. With such exceptional railroad facilities and with an enormously rich mining district from which to draw, as well as a highly productive farming section, it is not surprising that Torreon has grown from an insignificant Indian village in 1896 to one of the most progressive centers of population in Northern Mexico. As recently as 1887, the site of the present town was the El Coyote ranch. The name Torreon was taken from a watchtower which the ranch owner erected as a precautionary measure against marauding Indians who infested the region. "Today Torreon has substantial brick and cement business houses, electric lights and telephones, several big cotton factories, the largest soap factory in the Southern republic, important flour mills, and gigantic smelters which reduce ores sent from mines hundreds of miles distant. "The cotton factories are supplied with raw material from the great Laguna district which produces nine-tenths of all the cotton raised in Mexico. The size of the crop depends largely each year on the amount of rainfall during the wet season, which begins in June and continues until October. During the fall months, following the rain, the streams of the Laguna district overflow their banks, covering the valleys with water to a depth of several feet. After this has soaked into the land the farmers plow the dried crust of soil and leave it until February or March when the cotton is planted. "The less progressive natives, who are content with a smaller yield, do not find it necessary to plant their crops often than every eight or 10 years for cotton is perennial in this region. The plant was found in Mexico by the Spaniards, Columbus recognizing it off the mainland of Yucatan in 1502. The Aztecs and Toltecs knew its uses and not only did they weave beautiful garments of it but they used it in quilted form to make breast-plates which were proof against arrows. "Torreon has quite an extensive trade with the outside world, importing electrical, mining and agricultural machinery and exporting gold, silver, lead and the rubber manufactured from the Guasule shrub which grows in this region. "It is a ride of 25 minutes on the electric cars to the large suburban town of Lerdo, just over the border of Coahuila in Durango. Here the rents are much cheaper than in the larger city."

REGISTRATION SLOW WITH VOTERS AT VERDI TOWN

Pythian Sisters Install New Officers at Lincoln Hall; Personal News Notes

Special to the Gazette VERDI, July 14.—Besides the regular meeting, the local lodge of Pythian sisters held installation at Lincoln hall last Tuesday night, the following officers taking the chairs to serve for the ensuing term: Grace Nicholas, most excellent chief; Myrtle Stevenson, excellent senior; Mabel Coe, excellent junior; Miriam Swanson, manager; Bergitte Jensen, protector, Loretta Borden, guard; Rose Pixley, mistress of records and correspondence, and Annie Porter, mistress of finances. Past Chief Phemie MacDonald was presented with the past officer's pin, the gift of the lodge, and she in turn had the membership presented as her guests to an informal supper at the conclusion of the exercises. Those present included Ella Allen, Iris Powning, E. J. MacDonald; Anna R. Fitch, Myrtle Nicholas, Grace Nicholas, Myrtle Stevenson, Mabel Coe, Miriam Swanson, Bergitte Jensen, Loretta Borden, Rose Pixley, Annie Porter and Phemie MacDonald. Ed D. Brown, superintendent of the Truckee River General Electric Company, motored up from Reno Tuesday to inspect the company's Verdi power plant. Mrs. Hampton and daughter, Miss Ruth, were arrivals on the evening train Tuesday from Reno. They are guests at the Country Club, a mile west of Verdi. Miss Katie Jensen is here from San Francisco for an extended visit to her parents, Mr. and Mrs. J. Jensen. Mrs. J. Blawie and little granddaughter, Miss Jane Harker, returned Tuesday night from a short trip to Reno. Mrs. C. D. Terwilliger made the round trip to Reno by automobile Tuesday. Miss Dorris Morrill is visiting at the home of her uncle, G. E. Morrill at Truckee. Jens Jensen left yesterday morning for a brief visit to relatives in Sparks. Mr. and Mrs. C. L. Brown and Mrs. J. W. Phillips were automobile visitors to Reno on Tuesday. Miss Cecile Parent was an arrival yesterday morning for a week's visit as the house guest of Mrs. Fred Pittson. Thomas True, electrician for the power company, returned to Reno yesterday morning via the jitney service. A. W. Allen was a Reno visitor on Tuesday. Ex-Senator George T. Mills, of the Nevada fish commission, was an arrival Wednesday night on an inspection trip to the hatchery across the river from Verdi. Registration for the general election is proceeding very slowly. Apparently the rank and file of the electorate in this district do not seem to realize that it is necessary to register in order to enable them to vote at the coming election. This applies to both men and women. Although the books have been open for nearly two weeks only 20, 11 men and nine women have presented themselves to Registration Clerk J. P. Morrill for registration. Of this number eight claim to be Democrats and nine Republicans, while three have declined to state their party affiliations.

453,516 MEMBERS OF ELK LODGES IN AMERICA

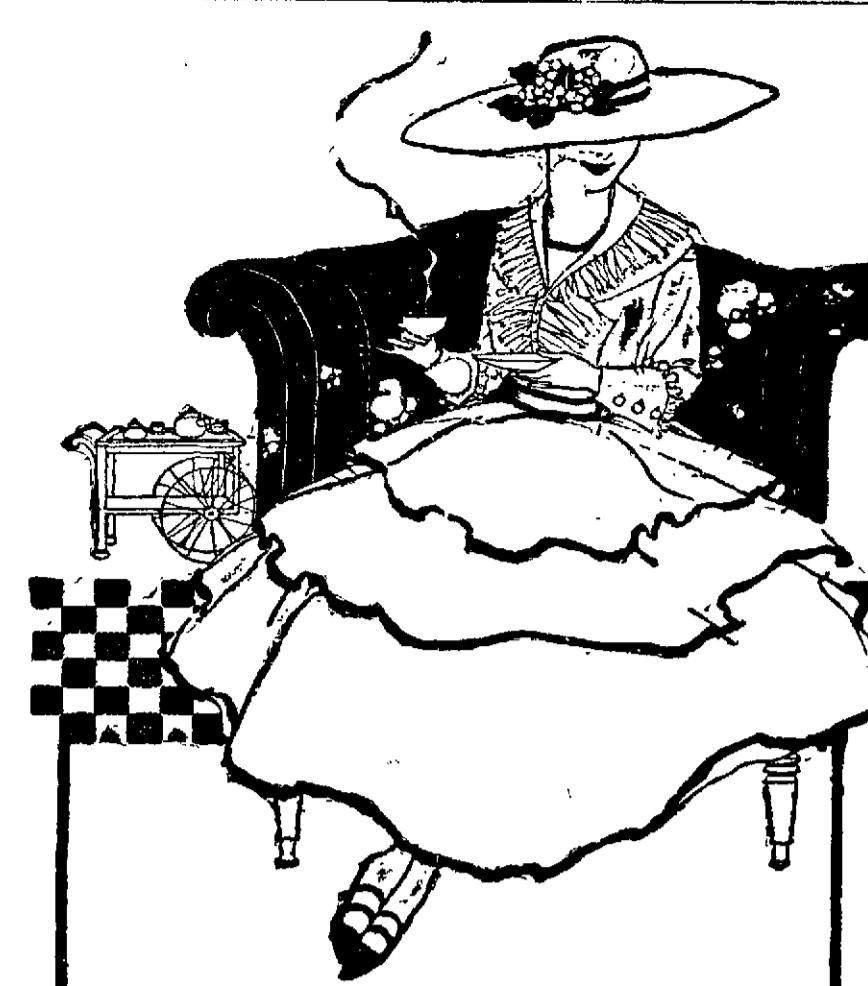
Order Owns Assets Valued at \$28,378,726.62; It Is in Flourishing Condition

Fred C. Robinson of Dubuque, Ia., grand secretary of the E. P. O. E., in the grand lodge, which opened its annual session in Baltimore Tuesday, submitted an annual report which showed the order to be in a flourishing condition. He said that 13 years ago the grand lodge had met in Baltimore and that despite the hoodoo of "13" comes back in the best condition it ever has been. The report said: "During the past year, we find that 43,229 new members have joined our ranks, making a total membership in good standing on April 1, 1916, of 453,516; 14 new lodges were added, the last dispensation issued being No. 1340. During that time 151 members were suspended or expelled, 19,237 were stricken from the rolls for nonpayment of dues and 5114 were deceased. These figures indicate a condition of affairs that challenges the earnest attention of those who have the welfare of the order at heart and who are endeavoring to place it upon a sound foundation in the fraternal world. Not that the figures are so much larger than in former years, but they go to show that lodges are beginning to realize that it is useless to carry on the roster undesirable members. "The total receipts of the grand lodge for the year were \$212,659.88. The capita yielded \$113,233.25; new home tax, \$45,008.95 (making a total collected for the home of \$435,408.78); for dispensation, \$750; for Elks' home members per capita tax, \$5659.16; for sale of supplies, \$30,409.15, and all other sources, \$925.10; total interest on investments was \$12,926.17. "The surplus is \$755,977.88 an increase over last year of \$61,423.83 caused principally by the collection of the home tax of \$45,008.45 and interest of \$7459.57. "The cash now in the several funds is as follows: General fund, \$129,498.20; national home fund, \$134,855.77; emergency charity fund, \$6449.59; reserve fund, \$15,496.15 and several contingent funds, \$8500, a total in cash of \$291,789.71. "The balance on hand in the treasuries of the subordinate lodges from former reports is \$1,748,755.44. "The total amount received by subordinate lodges from all sources was \$9,182,710.92; amount expended \$9,251,637.78. The net assets of subordinate lodges amount to \$28,378,726.62. "There are 1092 lodges having in connection the club features; 62 of this number support a buffet or locker system. The total value of property of lodges owning their own buildings and furnishings of club rooms is \$26,000,000. During the past year 76 homes have been dedicated and many others are in the course of construction. "There are two lodges whose initiation fee is \$100; five, \$75; one, \$60; two, \$52; 152, \$50; 14, \$40; 81, \$35; one \$32; 52, \$30; one, \$26; and 921, \$25. "Dispensations were granted during the year for new lodges at Newton, Mass.; Alhambra, Cal.; Greenwood, S. C.; Noshu, Mo.; Blue Island, Ill.; Caribou, Me.; Chisholm, Minn.; Adams, Mass.; Sterling, Colo.; DeRider, La.; Lansford, Pa.; Bogalusa, La.; Henryetta, Okla., and Frankfort, Ill. "There are 46 lodges with membership of more than 1000, four more than last year. Seranton, Pa. lodge No. 123, had the largest growth in the year, 645 members, Brooklyn, N. Y., lodge No. 22, has the largest membership, 4436. In the 36 years, 1889-1916, the order has devoted to charity a grand total of \$3,145,968.45. During the past year New York, N. Y., lodge No. 4, devoted the largest sum to charity, the total being \$14,280.62."

BELGIAN FREEDOM IS OBJECT OF NEUTRALS

Whole World to Be Called on to Prevent Central Powers From Absorbing Nations

THE HAGUE, Netherlands, June 24.—(Correspondence of the Associated Press)—The complete restoration of Belgium is the object of a call to the neutrals of the Americans republics, three three Scandinavian states, Switzerland and Spain, which has been issued over the signatures of 120 university professors, artists, writers and other well-known men of Holland. It is declared that the government and parliament of the German empire alone of all the belligerents, have officially declared that they will endeavor at the conclusion of peace to put an end to the independence of a neighbor state. Various utterances of the Imperial Chancellor are quoted as bearing this out, and are interpreted as meaning that neither in a military nor economic respect, nor even in the arrangement of such questions as the relationship between the two languages of the country, is Belgium to be mistress in her own house. The call to the neutrals says: "The whole world, with the exception of Germany and her allies, is convinced that the robbery of any state whatever of its independence must be regarded as a crime and as a source of fresh wars. "It seems to us necessary," it continues, "that this principle shall now be uttered as the emphatic demand of all neutral peoples—necessary in order that those contemplating an assault on a small neighbor may feel less inclination thereto in the knowledge that such assault will not go unpunished; necessary, too, for the support of those in Germany itself who detect the competition policy. The neutrals have the right, duty and power to sit in judgment where the dilemma of the highest interests of humanity is concerned. They can refuse to maintain relations with a state which beforehand declares its intention to use a small neighbor to pay the score when the reckoning day comes."



There is Japan tea, for instance. You may drink it because you like tea—but it's possible that you would like some other tea-taste even better. Schilling's Best offers you four distinct taste-types of tea, and a simple inexpensive way to pick your favorite. Schilling's Best Sold through grocers only In standard packages, 8-oz. and 1-lb. Send for Taste Packet which contains four parchment envelopes of Schilling's Best Tea—Japan, Ceylon, Oolong and English Breakfast. Enough for five or six cups of each kind. Mailed promptly on receipt of 10 cents (stamps or currency). Address: A Schilling & Company, 333 Second Street, San Francisco.

VICTROLAS Records and Repairs SHEET MUSIC EMPORIUM OF MUSIC Phone 94 By the Bridge MONAMOBILE OIL FOR ALL MOTOR VEHICLES "The only oil guaranteed to run a machine a whole season without fouling the engine." STATE DISTRIBUTORS ASSOCIATED GASOLINE "More Miles to the Gallon." CALAVADA AUTO CO. RENO, NEVADA

Washoe County Bank RENO NEVADA The Old Pioneer Banking House DIRECTORS G. W. MAPES President F. M. ROWLAND Vice-President F. E. HUMPHREY Vice-President G. H. TAYLOR Cashier F. STADTMULLER Asst. Cashier C. W. MAPES Asst. Cashier J. R. VAN NABEL RUDOLPH BERZ DEPARTMENTS Commercial Trust Investment Exchange Foreign Escrow Collection Savings Loan Insurance Bonding Brokerage Transfer Safe Deposit 90TH SEMI-ANNUAL STATEMENT Condensed from Sworn Report of Condition On JUNE 30, 1916 As made on general call of State Bank Examiner RESOURCES Loans \$1,566,982.29 Bonds, etc. 302,318.90 Cash in Vault and Banks 583,295.54 Banking Premises and Annexes 180,000.00 Other Real Estate 42,478.18 Other Resources 45,796.70 \$2,720,871.61 LIABILITIES Capital Paid in Full \$ 500,000.00 Surplus and Undivided Profits 167,577.19 Deposits 2,063,294.42 \$2,720,871.61

MOTOR COMPANY HAS BEEN SOLD Entire Stock of Thos. Jeffery Is Taken Over By Concern in Michigan KENOSHA, Wis., July 14.—The entire stock of the Thomas B. Jeffery Company, with a capital of \$2,000,000, has been sold it was announced today, to Leo Higginson and Company of Boston and Charles W. Nash of Flint, Mich. The Jeffery Company is one of the largest makers of motor trucks and pleasure automobiles in the United States. The price was not announced. Mr. Nash is the president of the General Motors Company, but it was announced he would retire on August 1 to come here to take charge of the Jeffery plant. It is intimated here that the sale is a step toward the formation of a big company to compete with the General Motors Company for control of the automobile trade.

PACIFIC COAST LEAGUE STANDING OF THE CLUBS

Club	Won.	Lost.	Pct.
Vernon	57	40	.588
Los Angeles	52	39	.571
San Francisco	54	46	.545
Portland	41	41	.500
Salt Lake	39	49	.448
Oakland	38	55	.356

YESTERDAY'S SCORES
San Francisco, 8; Salt Lake, 3.
Vernon, 0; Los Angeles, 5.
Portland, 3; Oakland, 4. Eleven innings.

AMERICAN LEAGUE STANDING OF THE CLUBS

Club	Won.	Lost.	Pct.
New York	45	32	.584
Cleveland	45	33	.577
Boston	43	34	.558
Chicago	40	36	.526
Detroit	41	37	.526
Washington	39	37	.513
St. Louis	35	43	.449
Philadelphia	18	54	.250

NATIONAL LEAGUE STANDING OF THE CLUBS

Club	Won.	Lost.	Pct.
Brooklyn	44	25	.611
Philadelphia	40	31	.563
Boston	37	30	.552
New York	35	36	.493
Chicago	37	41	.474
Pittsburg	34	35	.472
St. Louis	26	43	.456
Cincinnati	22	46	.410

LIVE STOCK CHICAGO, July 14.—Hog receipts 19,000; market slow, 10c under yesterday's average. Bulk, \$9.65@10.00; light, \$9.45@9.95; mixed, \$9.35@10.10; heavy, \$9.30@10.15; rough, \$9.30@9.50; pigs, \$8.10@9.60. Cattle receipts 2000; market steady. Native beef cattle, \$7.10@11.00; western steers, \$8.10@9.25; stockers and feeders, \$5.40@8.40; cows and heifers, \$3.50@9.60; calves, \$8.50@12.00. Sheep receipts 9000; market weak. Wethers, \$6.35@8.40; lambs, \$7.50@10.85. KANSAS CITY, July 14.—Hog receipts 3000; market lower. Bulk, \$9.55@9.90; heavy, \$9.85@9.95; packers and butchers, \$9.70@9.95; light, \$9.60@9.85; pigs, \$5.00@9.40. Cattle receipts 800; market strong. Prime fed steers, \$10.00@10.60; dressed beef steers, \$7.50@9.90; western steers, \$7.00@10.00; stockers and feeders, \$6.25@8.25; bulls, \$5.50@7.25; calves, \$6.50@11.00. Sheep receipts 3000; market strong. Lambs, \$10.00@10.80; yearlings, \$7.75@8.25; wethers, \$7.25@7.75; ewes, \$6.75@7.40.

RALPH MULFORD BREAKS RECORD Drives His Big Car at Rate of 111.9 Miles An Hour on Omaha Speedway OMAHA, Neb., July 14.—Ralph Mulford, driving a Peugeot in the elimination drive for the big Omaha auto derby Saturday, broke the world's speedway record by turning off a journey at the rate of 111.9 miles an hour yesterday on the Omaha speedway. Durio Resta, who also drives a Peugeot previously held the record, which he established a month ago in Chicago. Fred Wagner, official starter for the American Automobile Association announced that the Omaha truck, which is a mile and a quarter in circumference, is the fastest in the country. He said it will be surprising if the drivers do not surpass all previous records during the race tomorrow.

TOBACCO USERS TO PAY VIENNA, July 14.—By raising the prices of cigars, cigarettes and tobacco by an average of 35 per cent, the Austrian state monopoly hopes to raise an additional sum of nearly \$16,000,000 a year.

LOCAL MARKET Following are the quotations furnished by the Nevada Packing Company and Wood-Curtis Company, Butte—27 1/2c. Eggs—Extra, 29 1/2c; special medium, 26c. Cheese—Northern California, extra, 16 1/2c Wisconsin flats, 21c; Wisconsin longhorns, 21c. Livestock—Cows, live weight, 4 1/2c; steers, 6@6 1/2c. Hogs, butchers' stock, 7@7 1/2c. Ewes, 5 1/2c wethers, 6c; lambs, 7c.

The Original Malted Milk Horlick's Malted Milk Nourishing Delicious Digestible The powder dissolves in water. Needs no cooking—Keep it on hand. Rick Milk Malted grain extract in powder. The Original Food-Drink for all ages. For infants, invalids and growing children. More nourishing than tea, coffee, etc. Pure nutrition, upbuilding the whole body. In the home, or at Hotels and Cafes. Invigorates nursing mothers, and the aged. Substitutes cost YOU Same Price

THE RIVERSIDE HOTEL H. J. GOSSE, Mgr. On the banks of the Truckee river. Strictly modern in every respect. Dancing is a feature every evening, except Sunday, at the Riverside in The Lanai Cafe

THE RENO NATIONAL BANK In order to better provide for the needs of our customers and to enable us to dispatch our business, we have completed erecting at 204 Virginia Street, corner Second, a modern fire-proof building in which is every modern facility for the prompt handling of the banking business of our customers. NEW SAFE DEPOSIT BOXES FOR RENT OFFICERS AND DIRECTORS George Wingfield, President. H. G. Humphrey, Vice-Pres. F. M. Lee, Vice-Pres. & Cashier. H. H. Kennedy, Asst. Cashier. J. D. Davey, Asst. Cashier. Henry Anderson, A. G. Fletcher, R. C. Turrittin, C. J. Miller, S. H. Wheeler, P. Saturno. WITH WHICH IS AFFILIATED THE BANK OF NEVADA SAVINGS & TRUST COMPANY

25 CENT Race Track TAXI Phone 103 Jack Williams

J. J. BURKE SILAS E. ROSS F. O. CHICK THE PERKINS-GULLING COMPANY FUNERAL DIRECTORS 142 Sierra St. Reno, Nevada Night or Day PHONE 231

Used Car SALE Within the next week we are going to dispose of our stock of used cars, regardless of price. Two 1916 slightly used Maxwell 25 Touring Cars \$585.00 One 1912 Studebaker \$275.00 One 1912 R. C. H. \$300.00 One 1913 Pilot, Westinghouse Shock Absorbers. A wonderful bargain at \$900.00 One 1916 Maxwell Roadster \$575.00 All the above cars are ready for the road. Come in and pick your car and make offer. Terms if desired.

CUYLER LEE 234 N. Center St. Phone 1234, Reno, Nev.