

STUDEBAKER OPENS LARGE NEW PLANT

The new \$20,000,000 plant of the Studebaker Corporation at South Bend, Ind., in which the Studebaker Light Six will be produced complete, was opened last Sunday with a spectacular demonstration, according to information received by E. Wells, of Weaver-Wells Company.

Hundreds of men from all over the United States and foreign countries were in attendance. They included the heads of some of the largest financial institutions, together with prominent officials from leading automobile manufacturing companies and representatives of the Automobile press. James F. Gurley represented the Chester N. Weaver Company at the gathering.

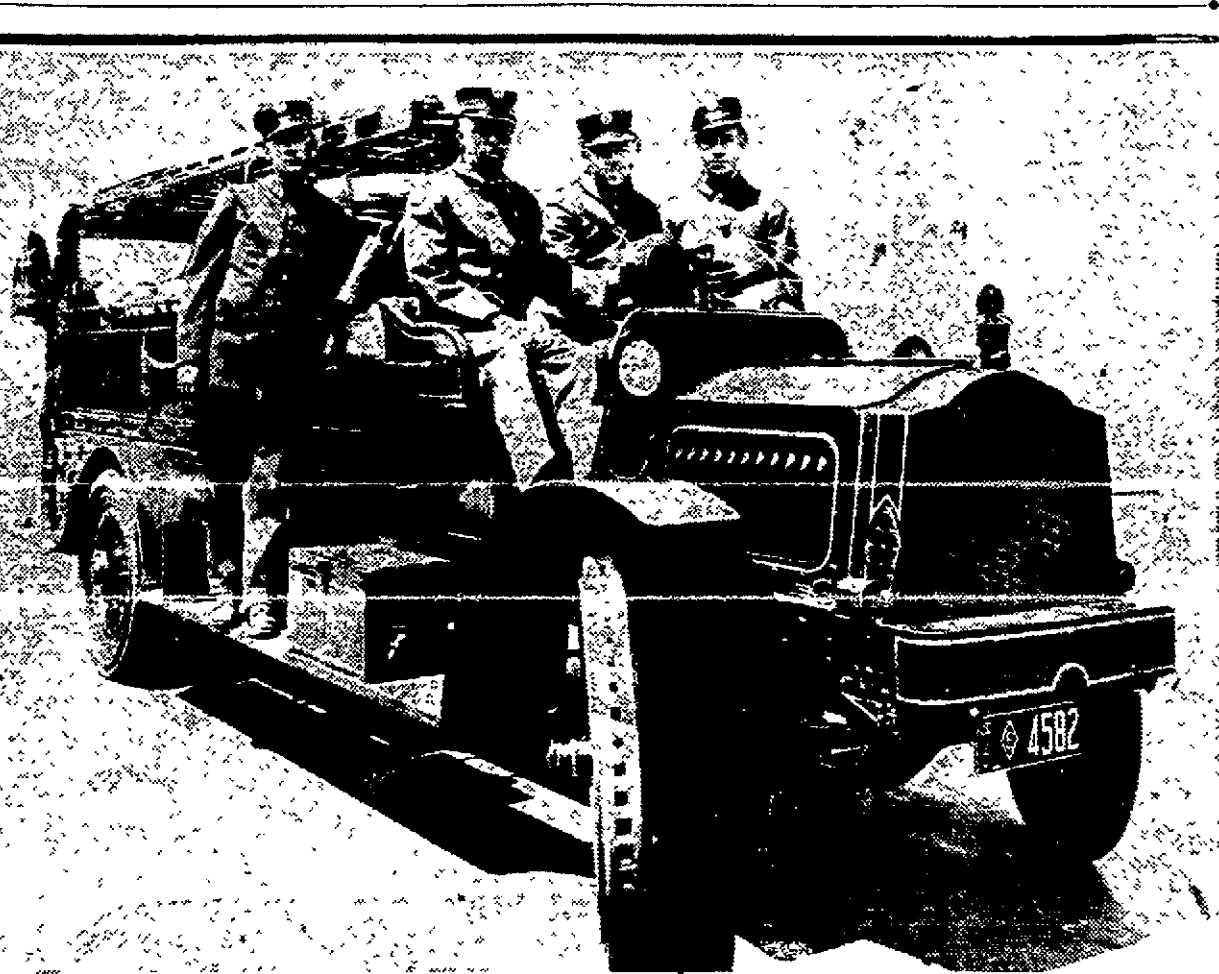
The out-of-town visitors were the guests at a banquet in the evening. At an amusement park the 7000 employees and their families participated in a great barbecue, athletic events and field day, which included a seven-act circus as an added attraction. Dancing in the afternoon and evening to the music of four massed bands, including the Studebaker band with a support orchestra, and between was a popular feature of the entertainment.

Ground was broken for the plant on March 19, 1919. Made up of ten major buildings, the new factory covers 85 acres and the buildings cover 3,000,000 square feet of active floor space.

The plant is of steel and concrete construction and is equipped with machinery of the very latest design. Everything that goes into the Studebaker Light Six will be manufactured in the new factory—bodies, axles, motors, transmissions, steering gears, springs, tops, fenders, upholstery and everything else.

When maximum production has been reached the plant will turn out 175 automobiles a day and will require 150 freight cars to handle incoming and outgoing material. A total of 16,000 persons will eventually find employment in the structure.

FOUR OF OAKLAND'S BRAVE FIRE LADDIES AND A PACKARD TRUCK RECENTLY fitted with Firestone cushion solid tires.



SAYS INDUSTRY MUST SLOW UP

Industry has hit too fast a pace and must slow down to let agriculture catch up with it if the country is to remain balanced, H. S. Firestone, president of the Firestone Tire and Rubber Company of Akron, told 600 of the company's factory foremen and executives at a recent assembly.

Industry everywhere, he declared, is faced with a grave crisis, new problems regarding raw material, transportation and other of its elements presenting themselves daily.

"We have taken too many boys off the farms, thus reducing the number of food producers," said Firestone. "And we have brought them into the city to work without providing sufficient housing facilities. We seem to have lost our balance, and there will be no peace for us until we get the right proportions of industry, agriculture and religion into our daily lives."

It was announced at the meeting that the scope of the foremen's institute conducted by the company will be enlarged to include weekly meetings for the exchange of ideas and to hear practical talks by expert engineers and authorities in various other lines.

Rules of Road Tersely Framed Benefit of Practice Proffered

"Don't" has been defined as the little word with the disagreeable sound, but the motorist who fails to pay attention to at least a few of the most essential "don'ts" of the road will find himself confronted with circumstances even more disagreeable.

Long experience at motoring and at dealing with motorists has convinced Charlie Burman, agent for the Oakland Sensible Six, of the wisdom of observing the following set of "don'ts" which he passes on for the benefit of motordom in general.

Don't fail to give all other vehicles their share of the road under all conditions.

Don't fail to give the proper signals when you are stopping, turning, or changing the course of your machine.

Don't drive at night without lights.

Don't pass any vehicle at an intersection.

Don't pass street cars at a speed exceeding ten miles per hour.

Don't exceed speed limits.

Don't ever operate a car unless you have a driver's license in your possession.

Don't carry luggage so that it extends more than 12 inches to the left side.

Don't fail to have a tail light lamp at night.

Don't fail to have your headlights properly adjusted according to the law.

Don't use a spotlight that violates the law.

Don't fail to give aid in case of accident.

FAMOUS '999' TAKES LAST SPIN

The famous old Ford "999" racing car, which was the first car in the world to travel faster than a mile a minute, upon whose performances in the days of 1902-3-4 were based the future hopes of Henry Ford and Barney Oldfield, made its last appearance upon any race track when of the Los Angeles Speedway it made its final whirl around the borderland saucer.

This car will be sent to Henry Ford where it will undoubtedly be placed in a conspicuous spot and form part of a collection that will depict the origin of this vast concern.

The car is the property of William L. Hughson, head of the large Coastwise automobile concern bearing his name, who a few months ago resuscitated it from a junk heap in Los Angeles. For many years this car eluded the searching parties of the two well known men who are credited to locate it.

At the conclusion of the semi-annual branch managers' meeting of the William L. Hughson company the car was taken to the Los Angeles Speedway for its final bow to the racing public, being guided around the famous race course by Mr. Hughson and his branch managers.

Its performance after these many years of absence from the track, was a surprise to the privileged spectators who looked with awe upon the red demon, its motor belching out flames gaining momentum that carried it beyond the mile a minute mark.

MYSTERY MEET OF AUTO TRADE PLANS ADVANCE

Plans for the Mystery Meeting which will celebrate the sixth anniversary of the Alameda County Automobile Trade Association on the evening of July 15 are progressing rapidly, according to advices from the office of Robert W. Martland, secretary of the organization and also of the state association.

All members of the Alameda County Association will assemble at the Oakland city hall plaza at 7:30 the evening of the celebration, and anyone who is late is strictly out of luck, for no one will know where they are going until they actually arrive at their destination.

Each year sees a larger number of men taking part in the affairs of the Automobile Trade Association and from present indications this summer's annual meeting will be no exception.

Walter Crinnion, Martland's assistant, believes a far greater number of members will attend the party than at any previous meeting of the year.

A school of instruction has been established by the Fire Department in Baltimore, Md., for fire truck chauffeurs.

A motor hospital, which visits remote districts to treat patients, is operated by the Health Department in Chicago.

Twice As Many Miles At Half the Price

That's just one of the reasons for the popularity of GATES HALF-SOLE TIRES in these days of motor trips out into the country. And there are other advantages, too, among them

The Gates Puncture-proof guarantee
The 20 per cent oversize

Drop into our store. We'll be glad to tell you more about the Gates Half-Sole Tires, giving you details on service records, local users' experiences, the superior construction of the tires, etc.

SERVICE

Your trucks must be in perfect condition to get the maximum results from them. You will be sure to keep them in first-class shape if you have us do your repair work.

We have a splendidly equipped repair shop. Our workmen are trained and expert.

You cannot go wrong by coming to us.

Body building. Auto repairing.

MASTER TRUCKS

We are the sole distributors for Alameda and Contra Costa Counties of the superior Master Truck.

Great Western Motors Co., 564-573 FOURTH STREET, Bet. Clay and Jefferson, OAKLAND, CALIFORNIA

Twice As Many Miles At Half the Price

That's just one of the reasons for the popularity of GATES HALF-SOLE TIRES in these days of motor trips out into the country. And there are other advantages, too, among them

The Gates Puncture-proof guarantee
The 20 per cent oversize

Drop into our store. We'll be glad to tell you more about the Gates Half-Sole Tires, giving you details on service records, local users' experiences, the superior construction of the tires, etc.

BERGER BROS.

21ST AND BROADWAY NEXT TO KEY ROUTE INN

SUNBEAM IS NEW CAR DUE HERE SOON

The Sunbeam, an English car of renown which came into American fame through its performance on the race track, and during the war, into world fame because of the powerful aeroplane motors produced by its makers at Wolverhampton, England, will be sold on the Pacific coast by the Scripps-Booth Company of California, the organization which is headed by R. C. Durant. Durant has been named Pacific coast agent by Dario Resta, who controls the American distributing rights.

The first chassis is expected here about August 1.

The Sunbeam will be the highest priced car in the west, and for that matter, in the United States.

Two chassis models are produced by the Sunbeam organization, one a four cylinder having a bore of 3.5 inches and a 5 inch stroke, cylinders cast in bloc, a five bearing crankshaft, a chain driven camshaft and all valves on one side of the motor. The six cylinder engine has the same bore and stroke as the four cylinder, but the cylinders are cast in two blocs of three each.

The advent of the Sunbeam on the Pacific coast will be the first of foreign cars in the close of the war, and also the first since 1914.

The number allotted to Durant is limited.

PROPER GEAR IS NEED OF TRUCK

"Selection of proper gear ratio is one of the most important questions to be considered in the matter of transportation by truck," according to Frank O. Rensstrom, distributor of Atterbury trucks. "Good hard roads with only normal grades require gearing which does not sacrifice speed for unnecessary power." Rensstrom points out:

"Conditions which present short stretches of heavy grade or an infrequent steep grade should have gearing which provides a maximum road speed with lower and reverse gears giving abnormal pulling power. Load conditions which do not warrant a high speed, or a hilly country having good roads, require a gear ratio giving a lower high gear speed than normal. Special gearing should be specified where extreme conditions are encountered."

Motor Truck Home Nearing Completion

The work of construction of the new headquarters for the sales service and part departments of the Metropolitan Motor Truck Company at Twenty-fourth and Main streets, Los Angeles, is nearing completion and it is expected that within two weeks it will be ready for business. When the removal of these departments from the old factory where they are now located, this will be operated as a direct factory branch.

The outer walls, the attractive white tiled brick front, the flooring and much of the interior work of the service department is completed and the finishing of the interior of the sales room, offices and parts department is now being expedited.

An interesting feature of the new branch headquarters will be the facilities provided for the handling of parts. Specially designed bins will be installed which will afford unusual accessibility to all of the stock and lead, in conjunction with the new system of handling, to speed up this important feature of truck service.

In the automotive industry, the oil, tires, and gasoline trades are greater than the automobile business itself.

Thus making complete the scenic attractiveness of Oakland's own park.

R. C. DURANT (top), who has taken the Pacific coast agency for the Sunbeam line, and HARRY MCKNIGHT, manager of the Scripps-Booth Company of California, who will direct Sunbeam sales.



Crazy Quilt of Laws Is Claim of Police

According to the International Association of Police Chiefs which met recently at Detroit, Mich., to consider the regulation of automobile traffic, there is throughout the United States a "crazy quilt of laws" that would take a man a lifetime to master.

Motor vehicles have been transported across the Delaware river, between Philadelphia, Pa., and Camden, N. J., at the rate of 640 an hour.



"It Sells By Comparison"

—what more can you say about a motor truck?—that after it has been compared with every other truck on the market in regard to the relative merit of every unit that goes into it—quality, price and the reputation for service of the house behind it, it is "The Truck that sells by comparison."

—Take the course of the wise man—investigate the need for a Day-Elder Truck in your business.

WEAVER-WELLS COMPANY

Day Elder Trucks
Studebaker Automobiles.

3321 Broadway
OAKLAND
Phone Lakeside 250

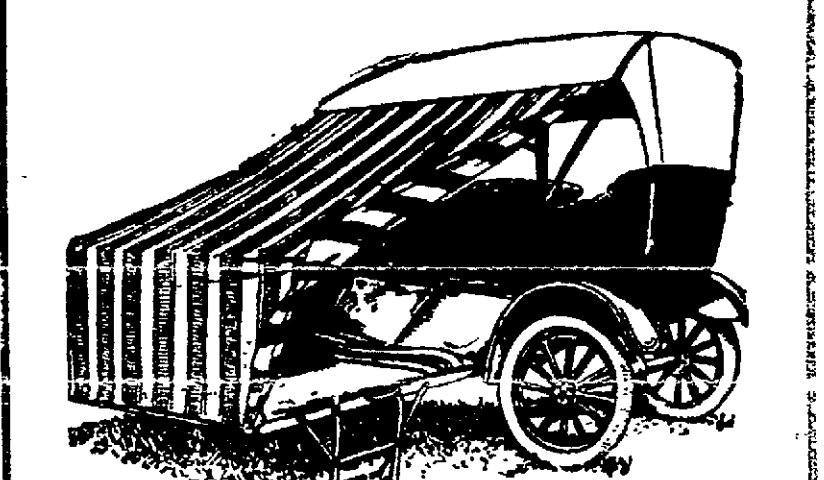
For the convenience of patrons, we remain open Saturday afternoon and Sunday morning.

CHESTER N. WEAVER CO., San Francisco

Big Fire Factory Opened in South

After 325 days in the making, the new \$20,000,000 factory of the Good-Tire & Rubber Company of California, which occupies part of the former Assoc Park tract at Los Angeles, has started manufacture of tires and is gradually approaching its allotted capacity production.

In less than eleven months the largest single industrial plant of the West has been erected, equipped with machinery and put into actual production under the direction of master minds skilled in every step connected with planning, financing, building and equipping a plant of this magnitude. From a cabbage patch has risen the largest tire manufacturing plant west of Ohio.



TRAVEL LIGHT--BUT RIGHT

You want comfort and convenience, but you don't want to carry too much luggage that becomes a burden. Folks who love the outdoors—who want to travel comfortably but who do not want to travel with a heavy load, select the

MUSSO AUTO CAMP BED

—because it affords all the comfort of a bed at home and the privacy of your own bedroom, and at the same time the entire outfit of bed, tent and dressing-room rolls up into a single compact bundle easily carried on running board or in the rear of the car. Double bed with sagless wire springs. Quilted feather mattress. Adjustable curtains and two special mosquito curtains. SEND FOR ILLUSTRATED FOLDER.

MADE BY
Musso Outing Equipment Co.
190-192 W. Santa Clara St., San Jose

For Sale by
W. E. STREI CO., 2305 Broadway, Oakland
MAXWELL HARDWARE CO., 1320 Washington St., Oakland

(No. 10 of a Series)

ARMLEDER Quality Motor Trucks

Fender and Steps Construction

Sturdy Fenders and Steps

ARMLEDER FENDERS and STEPS do not bend out of shape. They are supported by cast steel I-beam brackets, bolted to the frame by bolts so big and strong that Fenders and Steps cannot shake loose as on other trucks. The step boards are made of hard wood and edges are protected by angle irons to prevent splitting and wearing off. They are also securely bolted with cast steel step brackets. Fenders are made of boiler plate steel—5 times as heavy as is used by other companies. All brackets are strong enough to support the heaviest weight.

Next week we will explain Armleder Hood construction

TETER-DAVIS-ITUS Co.

DISTRIBUTORS

340-29TH STREET, OFF BROADWAY
ISAAC LESTER, Richmond—O'LEARY & MINAHEN, Stockton

Directory Service. Auto Sales, Accessories,

CYLINDER GRINDING

Also Crankshaft

General Machine Work
BUICK—SERVICE—DODGE. Marvel Caburetor Sale and Service Station.
GIROLA BROS.
Telegraph and Shattuck Ave.

EXPERT AUTOMOBILE REPAIRING

Radiators and Fenders repaired. We absolutely guarantee all work. Prompt service. Rate \$1.25 per hour.

H. & H. AUTO REPAIR SHOP. 2070 Broadway, Phone Oak. 8477

Ham & Otis

Expert Automobile Engineers. We stand back of every job. Complete line of automobile accessories.

79 12TH STREET
PHONE OAKLAND 5360

Scored Cylinders

Refilled pistons fitted on any make of machine

SCOVILLE MACHINE WORKS
8403-8405 Piedmont Ave., Oakland

Telegraph Garage

When in trouble call Bob. TELEGRAPH and ASHBY AV. Phone Berkeley 7438.

RADIATORS

Made and Repaired. New Corus Installed. Fenders and Bodies Straightened

ROWLAND
473 20th Street near Broadway. Phone Lakeside 214

NEW CAR DEALERS

2853 Broadway
Markham & Purser
Phone Lakeside 5472

Oldsmobile

Another 1 to 5 Tons

FEDERAL

TENTH YEAR REASON Satisfied Owners

A large number of the Federal Trucks sold in Oakland during the past year were repeat orders.

The first Federal ever built is still doing duty every day—many fleets contain almost every model from 1910 down to today—all going strong.

To satisfy a truck owner the first year is easy—to keep him satisfied and proud of his truck at the end of five to ten years is quite another matter. Federal has done this in many instances.

Ask us for actual facts about some of these old timers.

William L. Hughson Co.
Automotive Sales and Services Since 1903

Twenty-fourth and Broadway, Oakland
Lakeside 175

San Francisco Los Angeles, Portland Seattle, San Diego
Distributors for FEDERAL MOTOR TRUCKS CO., Detroit, Michigan

Why Pay More—It's So Comfy

NEWMAN AUTO-COMFORT BED CO.
A PULLMAN BED
\$13.50 to \$16 More Enjoyment. No Hotel Bills. Any 5 or 7-pass. car. Utilities seat cushions. Small light package.