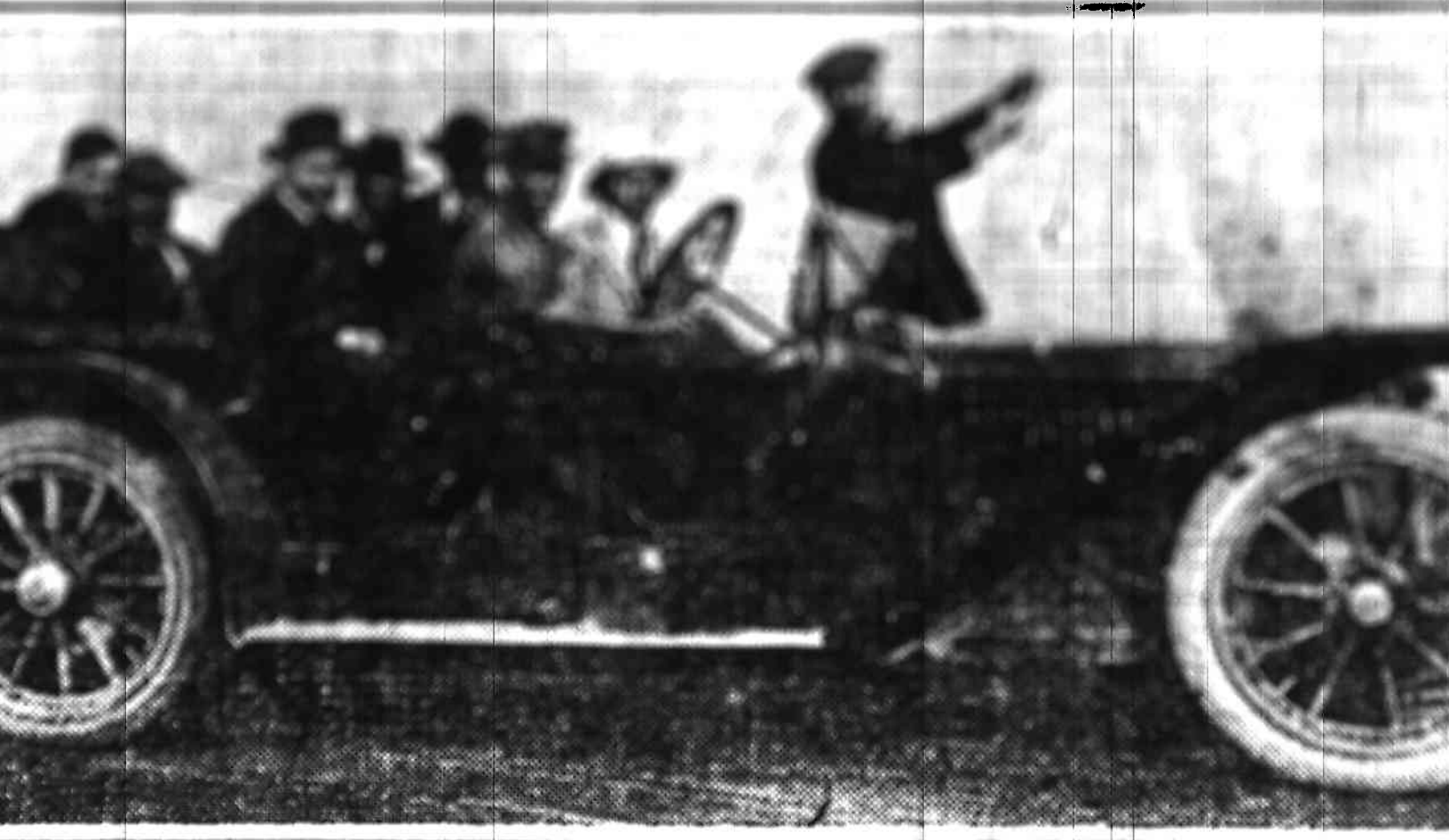




ING. TO SPEEDWAY FOR WORKOUT



### ENGLISH DRIVERS IN AMERICAN.

From left to right the passengers are G. L. Theobald, mechanic; Albert Guyot, driver; G. L. Moskovics, advertising manager of the American Motors Company; H. Geoffrey Fletcher, special representative of the American Motors Company in Mexico; G. E. Doeller, Columbus, Ind.; Percy White, driving the car; R. F. Crossman, R. N., engineer with the Sunbeam team, and Charlie Sedwick, general manager of the Speedway.

### WHITE TRUCK

Final scores in the Washington truck reliability and economy show that the three White were entered made a clean sweep in all classes and scored a remarkable fuel economy.

During the entire contest were under the scrutiny of the United States government committee, who rode on the truck to serve their work in detail under the most exacting conditions.

The White won the armory division, the 1,500-pound class, the 2,000-pound class, the 2,500-pound class, the 3,000-pound class, the 3,500-pound class, the 4,000-pound class, the 4,500-pound class, the 5,000-pound class, the 5,500-pound class, the 6,000-pound class, the 6,500-pound class, the 7,000-pound class, the 7,500-pound class, the 8,000-pound class, the 8,500-pound class, the 9,000-pound class, the 9,500-pound class, the 10,000-pound class, the 10,500-pound class, the 11,000-pound class, the 11,500-pound class, the 12,000-pound class, the 12,500-pound class, the 13,000-pound class, the 13,500-pound class, the 14,000-pound class, the 14,500-pound class, the 15,000-pound class, the 15,500-pound class, the 16,000-pound class, the 16,500-pound class, the 17,000-pound class, the 17,500-pound class, the 18,000-pound class, the 18,500-pound class, the 19,000-pound class, the 19,500-pound class, the 20,000-pound class, the 20,500-pound class, the 21,000-pound class, the 21,500-pound class, the 22,000-pound class, the 22,500-pound class, the 23,000-pound class, the 23,500-pound class, the 24,000-pound class, the 24,500-pound class, the 25,000-pound class, the 25,500-pound class, the 26,000-pound class, the 26,500-pound class, the 27,000-pound class, the 27,500-pound class, the 28,000-pound class, the 28,500-pound class, the 29,000-pound class, the 29,500-pound class, the 30,000-pound class, the 30,500-pound class, the 31,000-pound class, the 31,500-pound class, the 32,000-pound class, the 32,500-pound class, the 33,000-pound class, the 33,500-pound class, the 34,000-pound class, the 34,500-pound class, the 35,000-pound class, the 35,500-pound class, the 36,000-pound class, the 36,500-pound class, the 37,000-pound class, the 37,500-pound class, the 38,000-pound class, the 38,500-pound class, the 39,000-pound class, the 39,500-pound class, the 40,000-pound class, the 40,500-pound class, the 41,000-pound class, the 41,500-pound class, the 42,000-pound class, the 42,500-pound class, the 43,000-pound class, the 43,500-pound class, the 44,000-pound class, the 44,500-pound class, the 45,000-pound class, the 45,500-pound class, the 46,000-pound class, the 46,500-pound class, the 47,000-pound class, the 47,500-pound class, the 48,000-pound class, the 48,500-pound class, the 49,000-pound class, the 49,500-pound class, the 50,000-pound class, the 50,500-pound class, the 51,000-pound class, the 51,500-pound class, the 52,000-pound class, the 52,500-pound class, the 53,000-pound class, the 53,500-pound class, the 54,000-pound class, the 54,500-pound class, the 55,000-pound class, the 55,500-pound class, the 56,000-pound class, the 56,500-pound class, the 57,000-pound class, the 57,500-pound class, the 58,000-pound class, the 58,500-pound class, the 59,000-pound class, the 59,500-pound class, the 60,000-pound class, the 60,500-pound class, the 61,000-pound class, the 61,500-pound class, the 62,000-pound class, the 62,500-pound class, the 63,000-pound class, the 63,500-pound class, the 64,000-pound class, the 64,500-pound class, the 65,000-pound class, the 65,500-pound class, the 66,000-pound class, the 66,500-pound class, the 67,000-pound class, the 67,500-pound class, the 68,000-pound class, the 68,500-pound class, the 69,000-pound class, the 69,500-pound class, the 70,000-pound class, the 70,500-pound class, the 71,000-pound class, the 71,500-pound class, the 72,000-pound class, the 72,500-pound class, the 73,000-pound class, the 73,500-pound class, the 74,000-pound class, the 74,500-pound class, the 75,000-pound class, the 75,500-pound class, the 76,000-pound class, the 76,500-pound class, the 77,000-pound class, the 77,500-pound class, the 78,000-pound class, the 78,500-pound class, the 79,000-pound class, the 79,500-pound class, the 80,000-pound class, the 80,500-pound class, the 81,000-pound class, the 81,500-pound class, the 82,000-pound class, the 82,500-pound class, the 83,000-pound class, the 83,500-pound class, the 84,000-pound class, the 84,500-pound class, the 85,000-pound class, the 85,500-pound class, the 86,000-pound class, the 86,500-pound class, the 87,000-pound class, the 87,500-pound class, the 88,000-pound class, the 88,500-pound class, the 89,000-pound class, the 89,500-pound class, the 90,000-pound class, the 90,500-pound class, the 91,000-pound class, the 91,500-pound class, the 92,000-pound class, the 92,500-pound class, the 93,000-pound class, the 93,500-pound class, the 94,000-pound class, the 94,500-pound class, the 95,000-pound class, the 95,500-pound class, the 96,000-pound class, the 96,500-pound class, the 97,000-pound class, the 97,500-pound class, the 98,000-pound class, the 98,500-pound class, the 99,000-pound class, the 99,500-pound class, the 100,000-pound class.

Detroit high ideals of quality standards that could be satisfied with must embrace correct arrangement by a pleasurable, roomy seats, a engine that is built to powerful and strong. ch as axles, steering

### FEE NOW \$6.

May 24 - The new high goes into effect quite a lot of kicking of the bus wagons. be required to pay

\$3 for his license, to be paid to the county treasurer, who will issue metal numbers and placards. One-third of the fee goes to the state road fund, while the remainder goes into the county road fund.