

PLANT OPENS AT HORSELESS CITY

Prest-O-Lite Concern's Change Marks First Step in Assembling Industrial Community.

NEW FACTORY IS ENORMOUS

Contains 280,000 Square Feet of Floor Space and Cost Approximately \$500,000.

With the opening on Monday, May 13, of the new factory and offices of the Prest-O-Lite Company, near the Indianapolis Motor Speedway, the plans of Carl G. Fisher, James A. Allison and their associates for a gigantic "horseless city" near the world-famed race course commenced to be realized. The final removal of the great factory from Indianapolis to the site of the industrial community is the first important step toward assembling a group of manufacturing interests in the new city, which, it is intended, will make it one of the foremost automobile manufacturing centers in the world.

At present there are two factories in operation in the "horseless city," those of the Prest-O-Lite Company and the Swartz Electric Company, makers of automobile batteries and other electrical appliances. Negotiations are pending with a number of big manufacturing interests in Indianapolis and elsewhere and it is probable that within the near future a number of different factories will be devoted

CENTRAL P



Entry List

Car and Driver.

Stutz, Anderson
Stutz, Merz
Nyberg, H. Endicott
Keeton, Burman
Mason, Evans
Mason, Tower

a number of big manufacturing interests in Indianapolis and elsewhere and it is probable that, within the near future a number of different factories, all devoted to the manufacture of automobiles, motor-cycles or accessories, will be under construction.

The new plant of the Prest-O-Lite Company has a total floor space of 275,370 square feet. The group of buildings includes a general office building, factory and machine shops, generator house, charging plant, power plant, gas holder and garage. Warehouses are at present under construction, which, when completed, will bring the total floor area considerably above 280,000 square feet. The various plants operated by the Prest-O-Lite Company had a floor area of only 90,000 square feet. The new group of buildings cost approximately \$500,000.

OFFICE NEAR SPEEDWAY.

The main office is situated just opposite the main entrance of the Speedway, and is the center of the group of buildings. It is a two-story structure of reinforced concrete, with brick panels. The lower floor contains the accounting department and offices of the shipping department in the east section. Stock rooms and the postoffice take the remainder of the lower floor. The volume of mail of the Prest-O-Lite Company is so great that a regular government post-office was established to meet the demands made upon mail service. The offices of the sales and advertising departments are on the second floor with private offices for each department and each executive.

Directly back of the general office building and connected by a bridge, is the main factory, where the steel cylinders are made and where all the company's manufacturing, with the exception of gas-making, is conducted. In addition to making the Prest-O-Lite cylinders, there is equipment for manufacturing the Prest-O-Torch, Prest-O-Welder, Prest-O-Liter, Prest-O-Lite automatic reducing valve and various other articles connected with the use of Prest-O-Lite. This building is also of reinforced concrete with brick facing.

WALLS OF STEEL AND GLASS.

The feature of "suppressed lateral walls" has been followed in construction here and in the rest of the buildings, the sidewalls, aside from the supporting pillars, being steel and glass. The estimated capacity of the factory is 1,200 Prest-O-Lites per day. A double railroad spur running the entire front of this building and the shipping building to the east affords greatest facilities for loading and unloading cars. East of the main factory building are the structures housing the charging plant, the power plant and gas holder. The generator house is located about half a mile distant from the rest of the group.

The garage which houses the motor trucks and cars of Prest-O-Lite employes is located just east of the executive building.

The work of grading the grounds and approaches to the new Prest-O-Lite fac-

| | | |
|---------------------------------------|---|---|
| Kecton, Burman | 4 | 4 |
| Mason, Evans | 4 | 4 |
| Mason, Tower | 4 | 4 |
| Delta, Delling | 4 | 4 |
| Stutz, Herr | 4 | 4 |
| Sunbeam, Guyot | 6 | 3 |
| Henderson, Knipper | 4 | 4 |
| Fox Special, Wilcox | 4 | 4 |
| Peugeot, Goux | 4 | 4 |
| Peugeot, Zucarrelli | 4 | 4 |
| Anel, Liesaw | 4 | 4 |
| Schacht, Jenkins | 4 | 4 |
| Mercer, DePalma | 4 | 4 |
| Mercer, Bragg | 4 | 4 |
| Mercer, Wishart | 4 | 4 |
| Mercedes-Knight, Pilette | 4 | 3 |
| Pennebaker-Stearns-Knight, Pennebaker | 4 | 5 |
| Tulsa, Clark | 4 | 4 |
| Mercedes, Mulford | 4 | 4 |
| Isotta, Grant | 4 | 4 |
| Isotta, Tetzlaff | 4 | 4 |
| Isotta, Trucco | 4 | 4 |
| Case, Disbrow | 4 | 5 |
| Case, W. Endicott | 6 | 4 |
| Case, Nikrent | 4 | 5 |
| Mason-Special, Haupt | 4 | 4 |

tory is now being carried out. A winding drive will lead from the road to the main office building and a wide expanse of lawn and gardens will cover the space between the buildings and the road.

The Prest-O-Lite Company will hold its formal open house during the week preceding the annual 500-mile International Sweepstakes race on May 30. At that time thousands of visitors from all parts of the country will be in Indianapolis and will be made welcome at the new plant.

With the advent of new manufacturing interests to the "Horseless City," work will be pushed on installing all modern conveniences. At the present time, every street is piped for gas and water, and provision has been made for installing electric lights and electric street lamps. Streets have been laid out and are now being graded ready for putting in curbs and sidewalks.

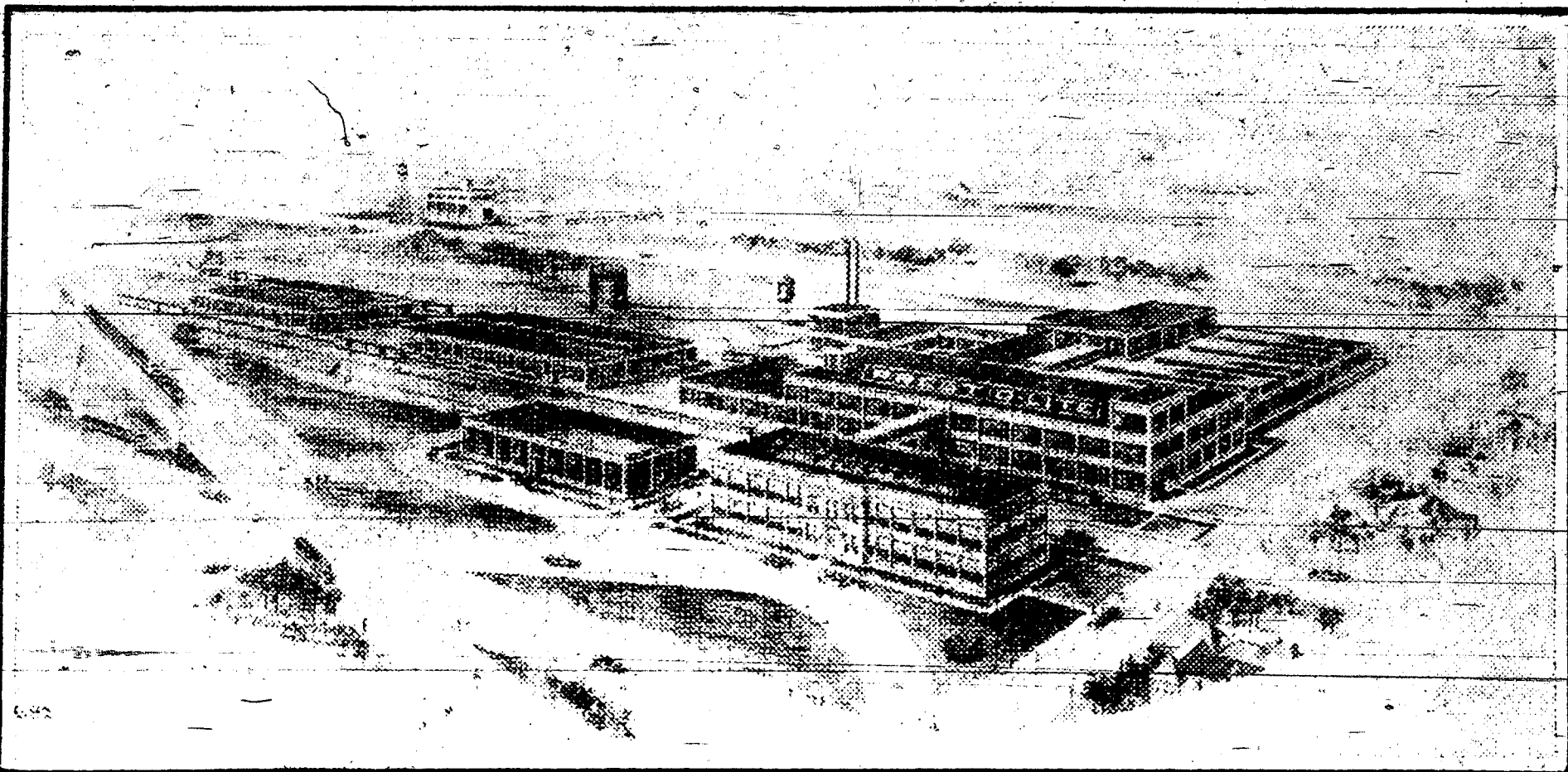
MAKES NEW RECORD

One of the most enthusiastic motor-cyclists of South Carolina is Thomas E. Wicker, a rural mail carrier from Newberry. It usually takes him only about two hours to cover his twenty-five-mile route. Recently, however, he eclipsed even his own good record. He was riding from Ballentine to Newberry. As he passed through Chapin, twenty-three miles from home, a fast train on the C. N. & L. was just pulling out of the station. Although the roads were in bad condition Wicker chugged into Newberry at the same time the train arrived.

Foreign Pick U

The French are trying hard already mastered they use oil they have learned the ing introduction conventional ing, and, of slang expressions Yesterday Ju practice from hand. One of made a good s his approval a turning to a lish: "Some b Zucarrelli al lish words be Sedwick with B. Martin, p overheard the Albert Guyot, rell parle An speaks English Peugeot pilot. cow). Goux also is lily. He com fore dinner a paper telling to see the Ind

CENTRAL PLANT AT NEW SPEEDWAY CITY.



PREST-O-LITE PLANT.

AT CITY

Change
nbling

MOUS

Feet of
roxi-

May 12.
of the
Indian-
of Carl
heir as-
ss city
se com-
removal
polls to
ty is the
embling
s in the

DAWSON DEVICES