

PEN  
ILSON

y to Gov-  
Durbin  
sis.

WORK

Repub-  
in First  
gn.

(Special)—  
cted as pri-  
rrior Mount  
died at his  
His death  
e which he

for several  
se and his  
oving up to  
became un-  
me, and re-

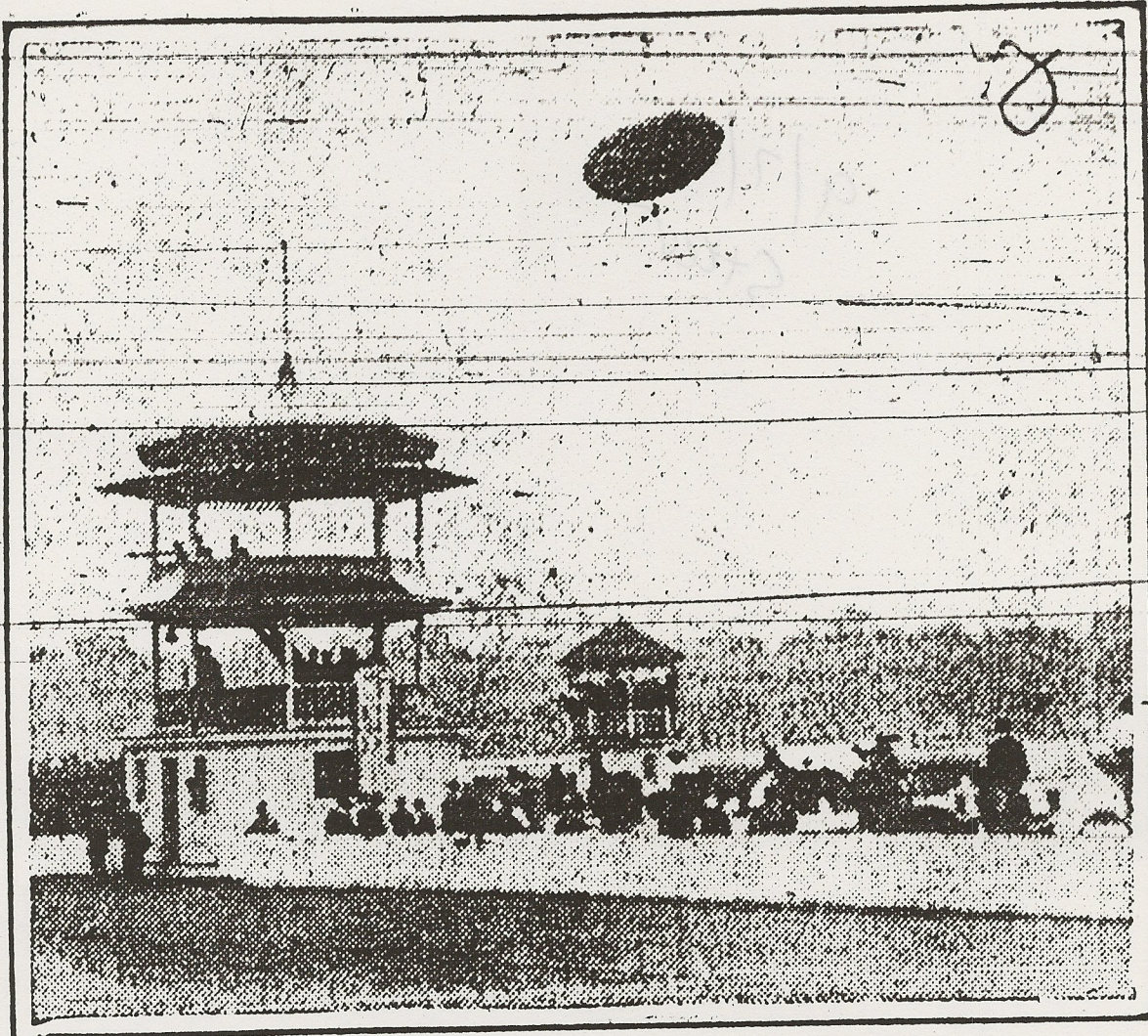
ls city fifty-  
as 15 years  
the time he  
governors, he  
wspaper of-

per.

ed the office  
an apprentice.  
n. He con-  
of years in  
reporter for  
He sold the  
eral years as  
le to do edi-  
here.

by the La-  
was manag-  
1896, when  
secretary to  
ernor Mount  
Durbin se-  
city

## Bumbaugh Flies at State Fair.



BALLOON OVER RACE TRACK.

Four flights were made yesterday by G. L. Bumbaugh in his dirigible balloon. The weather was favorable, there being neither sunshine nor breezes. Too much wind makes the big bag unmanageable and too much sunshine expands the gas, putting the aeronaut in danger of an explosion and consequent fall. In the morning two short flights of five minutes each were made, and in the afternoon one of ten minutes and one of twenty minutes. Little trouble was experienced in steering the balloon anywhere at the will of the pilot. The balloon tent is east of the race track and the ascensions are made from a big open field north of the balloon tent.

In his last long flight Bumbaugh sailed

out over the race track, following the course a number of times. After nearly twenty minutes of demonstrating in curves and straightaway dashes his ability to handle the ship, Bumbaugh started to make a turn against the wind and snapped a rib in his rudder. Without a moment's hesitation the balloonist signaled to his attendants below, and, dropping an anchor bag, which they caught, he was soon near the ground. The big bag, shaped not unlike some of the Berkshire hogs on exhibit, once level with the ground, was carried back to the tent. The rudder will be readily repaired. Without the rudder the balloonist might have drifted at the will of the wind but for his prompt action in dropping the anchor bag. The flights were at a height of about 800 feet.

FIRST NIGHT SHOW HELD RURAL CARRIERS ELECT